



Life is Precious.  
Be Safe.

Koopers Distribution Sdn Bhd

☎ 03-78324338

🌐 [www.koopers.co](http://www.koopers.co)

📘 [www.facebook.com/koopersmalaysia](https://www.facebook.com/koopersmalaysia)

✉ [sales@koopers.co](mailto:sales@koopers.co)

📍 8, Jalan Zuhal U5/178, Seksyen U5, Bandar Pinggiran Subang  
40150 Shah Alam, Selangor, Malaysia



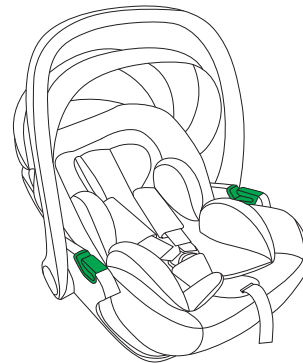
Life is Precious.  
Be Safe.

**R129 SAFE** COLLECTION

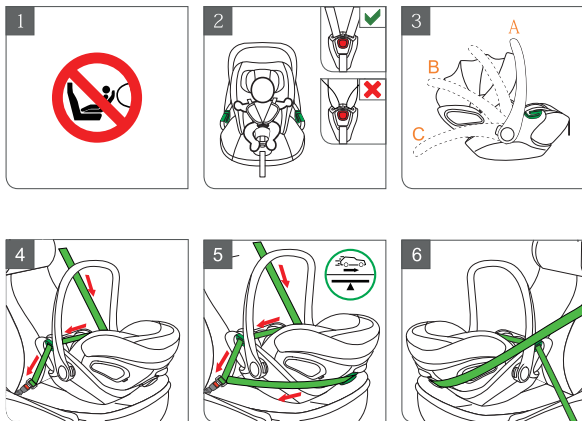
**ERGO**

40-87cm

Birth to 15 months



**WARNING!** The following short instruction is intended to provide only an overview. In order to achieve maximum security and comfort for your child it is absolutely imperative that you read the whole instruction manual carefully.



## DEAR CUSTOMER!

Thank you very much for purchasing the Ergo . We assure you that in the development process of the car seat we focused on safety, comfort and user friendliness. The product is manufactured under special quality surveillance and complies with the strictest safety requirements.

**!** **WARNING!** For proper protection of your child, it is essential to use and install the car seat according to the instructions given in this manual.

**NOTE!** Please always have the instruction manual at hand.

**NOTE!** The newborn inlay protects your child. It must be used up to size of 60 cm.

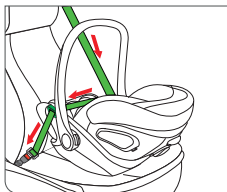
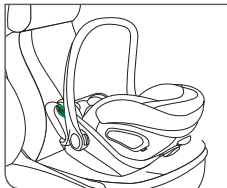
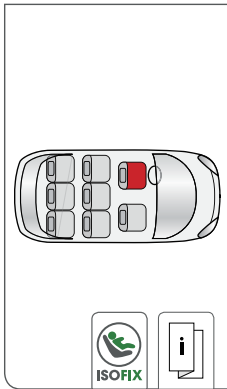
**NOTE!** Due to country-specific requirements (e.g. colour labelling on the car seat), the product features may vary in their external appearance. This, however, does not affect the correct functioning of the product.

# CONTENT

PROTECTING THE VEHICLE	1
CORRECT POSITION IN THE VEHICLE	2
SAFETY IN THE VEHICLE	3
SAFETY FOR THE BABY	4
ADJUSTING THE CARRYING HANDLE	5
ADJUSTING THE SUN CANOPY	6
ADJUSTING TO BODY SIZE	7
STRAPPING WITH HARNESS SYSTEM	8
INSTALLING THE INFANT CAR SEAT WITH VEHICLE BELT	8
ADJUSTING THE SIDE PROTECTORS	10
CORRECT SECURING OF YOUR BABY	11
CORRECT INSTALLATION OF THE INFANT CAR SEAT	12
REMOVING THE COVER	12
CLEANING	13
ADJUSTING THE RECLINING POSITION	14
TRAVEL SYSTEM	15
WHAT TO DO AFTER AN ACCIDENT	15
PRODUCT LIFESPAN	16
DISPOSAL	17
WARRANTY	18

## PROTECTING THE VEHICLE

Traces of use and/or discolouration can appear on some vehicle seats made from delicate materials (e.g. velour, leather, etc.) if car seats are used. You can avoid this by putting, e.g. a blanket or a towel underneath the car seat. In this context also see our cleaning directions. It is essential that these are followed before the first use of the car seat.



#### CORRECT POSITION IN THE VEHICLE

This is a Universal Belted Enhanced Child Restraint System. It is approved according to UN Regulation No.129, for use in Universal seating positions as indicated by vehicle manufacturer in the vehicle user's manual.

If in doubt, consult the Enhanced Child Restraint System manufacturer or the retailer

**NOT TO USE REARWARD FACING ECRS IN SEATING POSITIONS WHERE THERE IS AN ACTIVE FRONTAL AIRBAG INSTALLED.**

Always check before buying the infant car seat whether the seat can be properly installed in your vehicle.



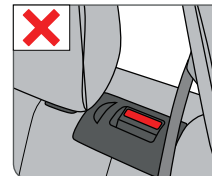
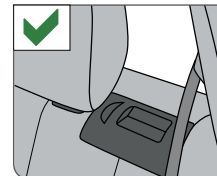
#### SAFETY IN THE VEHICLE

**! WARNING!** Never use the car seat on a vehicle seat with an activated front airbag. This does not apply to so-called side airbags.

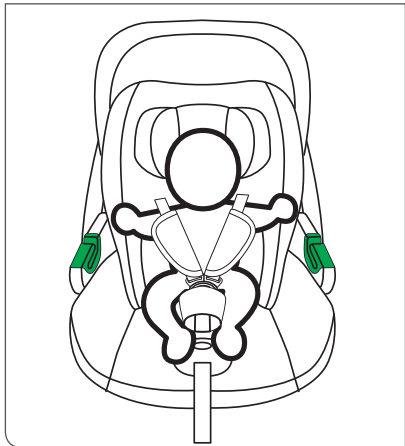
**NOTE!** The large-volume front airbag expands explosively and may cause your child serious injury or even death.

**! WARNING!** The car seat must always be secured correctly in the vehicle even when not in use. In case of an emergency brake or accident, an unsecured car seat may injure other passengers or yourself.

In order to guarantee the best possible safety for all passengers make sure that...



foldable backrests in the vehicle are locked in their upright position, you properly secure all objects likely to cause injury in the case of an accident. that the car buckle is not reaching all the way to the belt routing. In case of doubt contact the retailer or manufacturer of the car seat. all passengers in the vehicle are buckled up.



**!** WARNING! NEVER hold a baby on your lap in a vehicle. The forces released in a collision are way too high for any person to hold on to the baby. Never secure yourself and the child with only one vehicle seat belt.

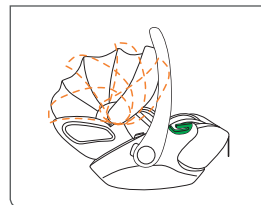
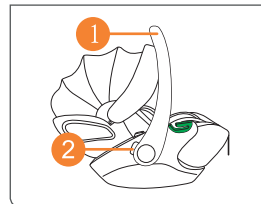
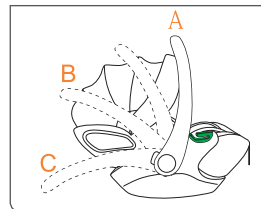
#### SAFETY FOR THE BABY

**!** WARNING! Always strap your child with the integrated harness system.

**!** WARNING! Please never leave your baby unattended in a vehicle.

Take your baby out of the infant car seat as often as possible in order to relieve pressure from his or her spine. Take breaks during longer car journeys for this purpose. Also ensure that you do not leave your baby for too long in the infant car seat even when not in the vehicle.

**!** WARNING! The plastic parts of the infant car seat heat up in the sun. Your baby can suffer burns from this. Protect your baby and the infant car seat from intense sun exposure (e.g. by placing a light cloth over the seat).



#### ADJUSTING THE CARRYING HANDLE

You can lock the carrying handle (1) in place in 3 positions:

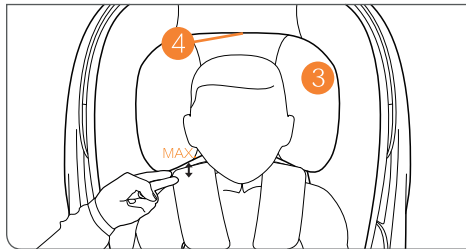
- A: Carrying/Driving-Position.
- B: For placing the baby in the seat.
- C: For a safe stand on a level surface outside the vehicle.

**!** WARNING! In order to prevent the seat from tipping over during carrying, check whether the carrying handle (1) is locked in place in carrying position A.

To adjust the carrying handle (1), simultaneously press the left and right buttons (2). Then pivot carrying handle (1) forwards or backwards while pressing buttons (2) until it automatically locks in place in the desired position.

#### ADJUSTING THE SUN CANOPY

Unfold the sun canopy by pulling gradually on the plastic cover. To fold back, push the sun canopy back to its initial position.



### ADJUSTING TO BODY SIZE

#### Adjusting the Headrest

NOTE! The newborn inlay protects your child. It must be used up to size of 60 cm.

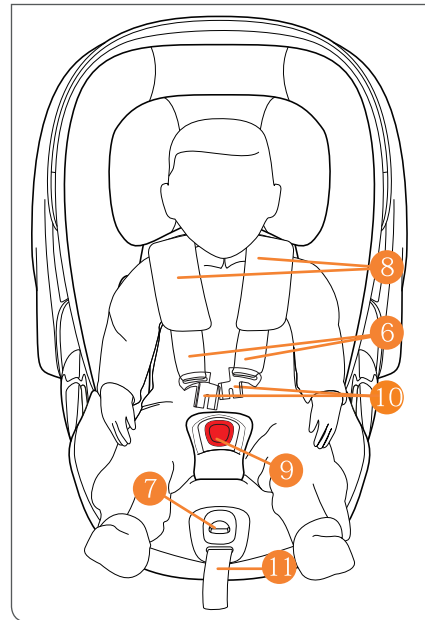
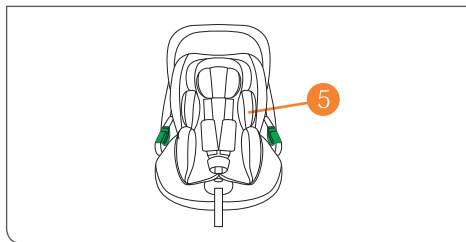
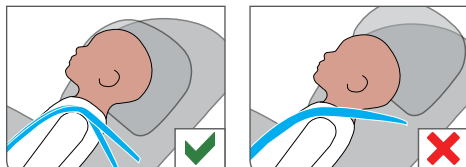
NOTE! The headrest (3) ensures the best possible protection for your child only if it is adjusted to the optimum height. There are 8 height positions that can be set.

The headrest has to be adjusted in a way that the distance between the child's shoulders and the headrest doesn't exceed 2 cm (approx. 2 fingers width).  
Check the height of the Harness Straps: Position the Harness Straps at or just below the child's shoulders for rear-facing use. Pull the adjustment handle (4) upwards to unlock the headrest (3). Now you can adjust the headrest.

NOTE! The shoulder belts are firmly connected to the headrest and do not have to be adjusted separately.

#### Removing the Newborn Inlay

The newborn inlay (5) may be removed after the baby is 61 cm (approx. 3 months) to provide more space for the child. To remove the newborn inlay (5) open and remove the shoulder pads. Then remove the newborn inlay and place the shoulder pads back on the shoulder belts.



### STRAPPING WITH HARNESS SYSTEM

NOTE! Ensure that the headrest is correctly locked in place before using the car seat.

NOTE! Ensure that the car seat is free from toys and hard objects.

The shoulder belts (6) are firmly attached to the headrest and must not be adjusted separately.

Loosen shoulder belts (6) by pressing the adjustment button on central adjuster (7) and simultaneously pulling both shoulder belts up.

NOTE! Please always pull on shoulder belt (6) and not on belt pads (8)

Undo the belt buckle (9) by pressing the red button firmly.

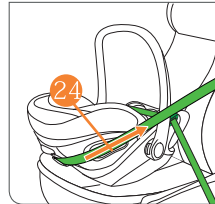
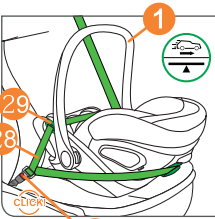
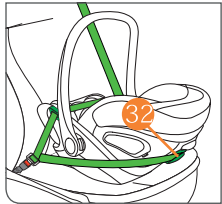
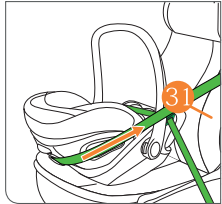
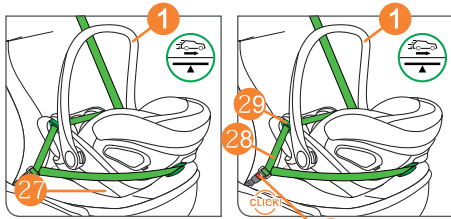
NOTE! Ensure that shoulder belts (6) are not twisted.

Put your child into the car seat.

Place shoulder belts (6) directly over your child's shoulders. Place both buckle tongues (10) together and lock them in place in belt buckle (9) with an audible "CLICK".

Pull cautiously on central adjustment belt (11) in order to tighten shoulder belts (6) until they fit your child's body.

NOTE! For the car seat to offer optimum protection, shoulder belts (6) should fit the body as closely as possible.



## INSTALLING THE INFANT CAR SEAT WITH VEHICLE BELT

### Installation

Place the infant car seat facing the rear of the vehicle on the vehicle seat.

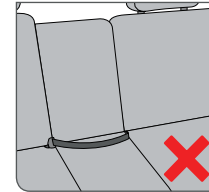
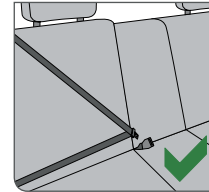
Ensure that the carrying handle (1) is locked in car position A. Ensure that the installation mark on warning sticker (27), located on the side of the infant car seat, is aligned with the floor of the vehicle. Pull out the vehicle seat belt and route it over the infant car seat. Place the lap belt (28) into green belt routings (29) on both sides of the infant car seat.

Lock the buckle tongue in place in vehicle seat belt (30). Tighten lap belt (28) by pulling on diagonal belt (31) in the direction of the front of the vehicle. Pull diagonal belt (31) behind the head end of the infant car seat.

NOTE! Do not twist the vehicle seat belt while doing this.

Activate the side protector (24) (see chapter „ADJUSTING THE SIDE PROTECTORS“). Route diagonal belt (31) through the rear green belt routing (32) and above the unfolded side protector (24). Tighten diagonal belt (31).

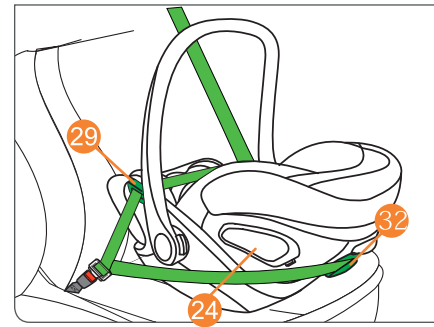
**!** WARNUNG! Diagonal belt (31) must be routed through rear, green belt routing (32) and above the unfolded Linear Side-impact Protection (24).



NOTE! The infant car seat may be used on all vehicle seats with three-point automatic belts according to UN R16. We recommend as a rule that the infant car seat is used in the rear of the vehicle. In most cases, your child is exposed to higher risk in the front.

**!** WARNING! The infant car seat is not suitable for use with a two-point or lap vehicle seat belt. Securing with a two-point vehicle seat belt could result in serious or fatal injuries to the child in the event of an accident.

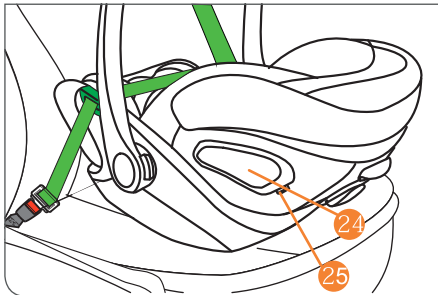
**!** WARNING! It may be that buckle part of the vehicle seat belt is too long so that it reaches the blue belt routing of the infant car seat. This means that the infant car seat cannot be fastened tightly. If this is the case, choose another seat in the vehicle for the infant car seat. In case of doubt contact the manufacturer of the infant car seat.



### Removal

NOTE! To prevent damage to your car and the car seat, the side protector (24) should be folded back before removing the car seat (see chapter „ADJUSTING THE SIDE PROTECTORS“).

Take the vehicle seat belt out of the green belt routing in the back (32). Open the vehicle belt buckle and take the lap belt out of the green belt routings (29).



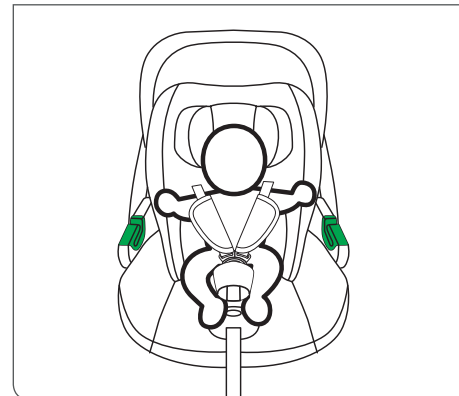
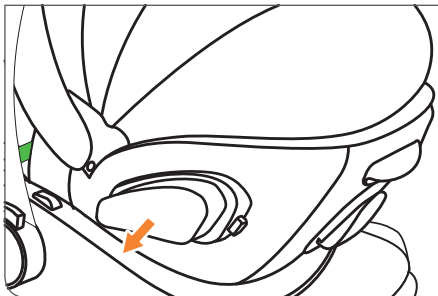
#### ADJUSTING THE SIDE PROTECTORS

The "Linear Side-impact Protection" (L.S.P.) is built into the car seat. This system enhances the safety of your child in the event of a side crash. In order to achieve the best possible protective effect, unfold the L.S.P. (24) as far as possible towards the vehicle door closest to the car seat. To Release the L.S.P push the marked area(25) on the L.S.P. If it's not possible to completely unfold the L.S.P. with a closed vehicle door, you may as well use the infant car seat with a closed L.S.P.

NOTE! Ensure that the extendable part locks in place with an audible "CLICK".

The L.S.P. can be completely folded back into initial position if you pull on the marked area (33).

NOTE! When using the car seat on a middle position in the vehicle, it's prohibited to fold out the (L.S.P.) device.



#### CORRECT SECURING OF YOUR BABY

To ensure your baby's safety, check that...

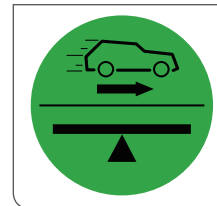
- shoulder belts fit the baby's body closely without constricting the baby and the belt is not twisted.
- the position of the headrest is correctly adjusted.
- the height of the harness straps for rear-facing use is aligned with the child's shoulders or just below.
- belt tongues are locked in place in belt buckle.

#### CORRECT INSTALLATION OF THE INFANT CAR SEAT

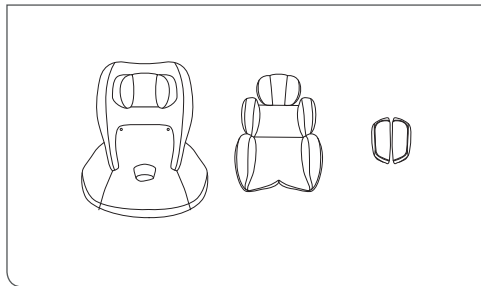
NOTE! The infant car seat is exclusively made for forward facing car seats, which are equipped with ISOFIX or with a 3-point belt system according to UN R16 (see chapter „CORRECT POSITION IN THE VEHICLE“).

To ensure your baby's safety, check that ...

- the infant car seat is secured with the child facing the rear of the vehicle.
- the infant car seat is only used on the front passenger seat if the front airbag is deactivated.
- the infant car seat is either fastened with the vehicle belt or with the base (see chapter „INSTALLING THE INFANT CAR SEAT WITH VEHICLE BELT“ or „CONNECTING THE INFANT CAR SEAT WITH BASE“).
- if possible the L.S.P. has been folded out on the side nearest to the car door, in order to achieve the best possible protective effect.







## REMOVING THE COVER

### Removal

The cover consists of 6 parts: 1 backrest cover, 1 leg support cover, 1 headrest cover, 2 shoulder pads and a newborn inlay. To remove, please apply the following procedure:

Undo the belt buckle.  
Remove both shoulder pads from the belt.  
Pull off the headrest cover from the headrest  
Undo both press studs between the backrest cover and leg support cover.  
Thread the belt buckle out of the leg support cover and then remove it.

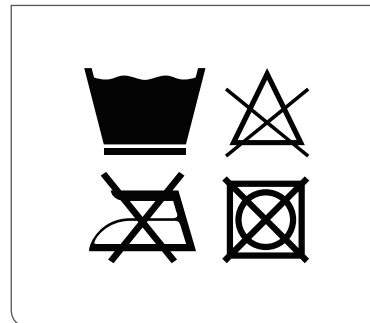
Undo the press stud (36) behind the sun visor.  
Now you can remove the backrest cover.

**!** WARNING! The infant car seat must under no circumstances be used without the cover.

### Attaching the cover

NOTE! Ensure to not twist or mix up the shoulder belts.

Follow the steps described above but in reverse order in order to re-fasten the cover. For the backrest cover please start at the side protector.



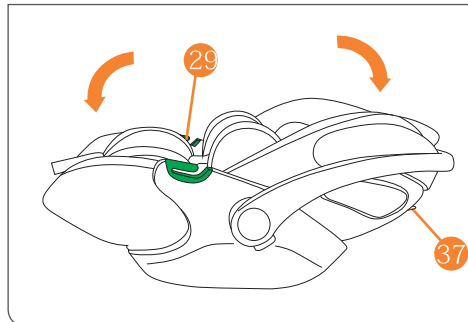
## CLEANING

It is important to use an original seat cover only since the cover is an essential part of the function. You may obtain spare covers at your retailer.

NOTE! Please wash the cover before you use it the first time. Seat covers are machine washable at max. 30°C on delicate cycle. If you wash it at higher temperature, the cover fabric may lose colour. Please wash the cover separately and never dry it mechanically! Do not dry the cover in direct sunlight! You can clean the plastic parts with a mild detergent and warm water.

**!** WARNING! Please do not use chemical detergents or bleaching agents under any circumstances!

**!** WARNING! The integrated harness system cannot be removed from the baby seat. Do not remove parts of the harness system.



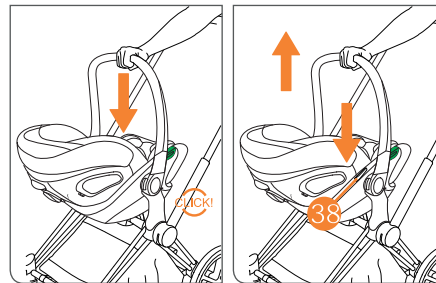
#### ADJUSTING THE RECLINING POSITION

**!** WARNING! The infant car seat must only be reclined outside of the vehicle.

The Ergo can be put into the reclining position by pulling the release button (37) at the same time as pushing the back section down. Ensure that the seat has been correctly locked in place in the reclining position. The position is permitted exclusively for use outside of the vehicle, for example on a stroller, and must not be used in a vehicle under any circumstances.

NOTE! Do not undertake any adjustments to the seat set up while the vehicle is in motion.

To get back to the sitting position, press the unlocking button while pulling the back section up until you hear the lock "CLICK".



#### TRAVEL SYSTEM

Follow the instruction manual for your stroller! You may attach the infant car seat on any approved stroller. Click the infant car seat onto the approved adapter with the child looking towards the parent. Make sure the infant car seat audibly locks in place on both sides. Always check that the infant car seat is firmly connected to the stroller. To unlock, press and hold both release buttons (38) on the infant car seat and lift it.

NOTE! Please check compatibility of the infant car seat with your stroller manufacturer.

#### WHAT TO DO AFTER AN ACCIDENT

**!** WARNING! An accident may cause damage to the car seat that is not visible to the naked eye. Please exchange the seat without fail after an accident. In case of doubt contact the retailer or manufacturer.

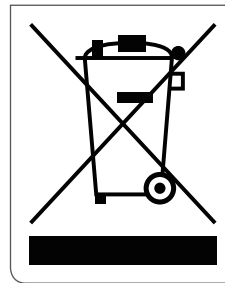
## PRODUCT LIFESPAN

This child seat has been designed to be able to fulfill its intended functions by ordinary use for a product life span of approx. 7 years. Gradual wear of the plastic, for example caused by exposure to sunlight (UV), can cause slight deterioration of the product's properties. Since very high temperature fluctuations and other unforeseeable stresses are common in vehicles, it is necessary to observe the following points:

If the vehicle is directly exposed to strong sunlight for long periods, the child seat must be removed from the vehicle or covered with a light cloth.

Check all plastic and metal parts of the seat regularly for damage or change of shape or colour. If you notice any change in the child seat, the seat must be disposed or checked and possibly replaced by the manufacturer.

Changes to the fabric, especially fading, are normal when used in a vehicle and do not impair the seat's function.



## DISPOSAL

To protect the environment we ask the user to separate and dispose the waste arising at the start (packaging) and the end (product parts) of the car seat's lifespan. Waste removal is arranged differently depending on the local authorities. In order to ensure that the car seat is disposed off in accordance with regulations, contact your area's waste removal agency or local authority. Always observe your country's waste disposal regulations.

**!** WARNING! Keep plastic packaging material out of your child's reach: danger of suffocation!

If you do not want to use the base any longer, return it free of charge to a recycling depot for used electric appliances.

**!** WARNING! Used electric devices do not belong in the household garbage.

**!** WARNING! Batteries are special waste and aren't allowed to be disposed in the household waste!

## WARRANTY

The following warranty applies solely in the country where this product was initially sold by a retailer to a customer.

1. The warranty covers all manufacturing and material defects, existing and appearing, at the date of purchase or appearing within a term of three (3) years from the date of purchase from the retailer who initially sold the product to a consumer (manufacturer's warranty). Please check the product with respect to completeness and manufacturing or material defects immediately at the date of purchase or immediately after receipt. Please always keep your dated proof of purchase.
2. In case of a defect, stop using the product immediately. To obtain the warranty please take or ship the product to the original retailer, who initially sold this product to you in a clean and complete condition and submit an original proof of purchase (sales receipt or invoice). Please do not take or ship the product to the manufacturer directly.
3. This warranty does not cover any damages which result from misuse, environmental influence (water, fire, accidents etc.), normal wear and tear or failure to comply with the instructions provided in this user manual. The warranty does not apply if modifications and services were performed by unauthorized persons or if non-original components and accessories were used.
4. This warranty does not affect any statutory consumer rights, including claims in tort and claims with respect to a breach of contract, which the buyer may have against the seller or the manufacturer of the product.