



Life is Precious.
Be Safe.

Koopers Distribution Sdn Bhd

☎ 03-78324338

🌐 www.koopers.co

📘 www.facebook.com/koopersmalaysia

✉ sales@koopers.co

📍 8, Jalan Zuhai U5/178, Section U5, Bandar Pinggiran Subang,
40150 Shah Alam, Selangor
Malaysia



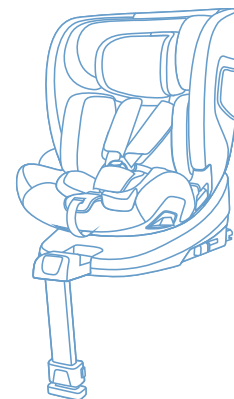
SPARK

I-Size universal ISOFIX

40-105cm/ ≤18kg

I-Size Booster seat

100-150cm



Instruction Manual

Contents

1. Contents	01-02
2. Introduction	03-07
3. Know your car seat	08-09
4. Car seat version	10-11
5. Use in the vehicle	12
6. Securing your baby	13
Using Baby Insert	13
Harness system & Headrest adjustment	14
Removing the 5-point harness system	15-16
change the reclining positions	17
7. Installation in the vehicle	18
Open support leg/Retract support leg.....	18

Installation instruction for STATURE 40-105cm,Rearward facing , ISOFIX + Support Leg + harness.....	19-24
Installation instruction for Stature 76-105cm,Forward facing , ISOFIX + Support Leg + harness.....	25-30
Installation instruction for Stature 100-150cm,Forwardfacing, ISOFIX attachment+Vehicle 3 point belt.....	31-33
Installation instruction for Stature 100-150cm, Forwardfacing, Vehicle 3 point belt.....	34
8. Maintenance.....	35
9. Service.....	36

Introduction

DearParents :

- Thank you very much for purchasing our product.
- The functions and design of this car seat offer safety and comfort when your child is in this child restraint.
- In order to use safely, please adjust the child restraint till it is suitable for your child.
- Take care whilst using this car seat and read the manual carefully
Research shows that a high number of car safety seats are incorrectly installed.
Therefore, please take the time to read through the instruction manual carefully.
- Our product offers maximum safety only when it is used in accordance with the instructions.
- Continuous research by our development team, user tests and consumer reactions ensure that we are kept fully up to date in the field of child safety.
- Therefore, if you have any questions concerning use of our product, please do not hesitate to contact us.
- You can see our contact information on our web site.

WARNING

- Read this instruction manual carefully.
 - The correct fitting of the ISOFIX and support leg anchoring systems is of vital importance for the safety of your child.
 - For the future use of the seat, it is important that you keep the instruction manual carefully. There is an instruction storage on the back of the seat where the instruction can be retained with the child restraint.
 - Never leave your child unattended in the car.
 - Do not use a child safety seat if the vehicle seat is equipped with a front airbag. This can be dangerous. This does not apply to side airbag.
 - **IMPORTANT-DO NOT USE FORWARD FACING BEFORE THE CHILD'S AGE EXCEEDS 15 months.**
-
- Before use our product, please read the instruction manual carefully, the product is a safety product and is only safe when used in accordance with the instruction manual.
 - The product must be used on a forward facing seat that is fitted with the ISOFIX and support leg anchoring systems.
 - The product may be used on either the front or the back seat. However, we recommend that it is fitted on the back seat.

- The product has been approved according to the strictest European safety standards(R129/03) and is for stature 40-105cm, Rearward facing, ISOFIX+Support Leg+Harness and is for stature 76-105cm, Forward facing, ISOFIX+Support Leg+Harness and is for stature100-150cm, Forward facing, ISOFIX attachment+Vehicle 3 point belt and is for 100-150cm, Forward facing Vehicle 3 point belt.
- After an accident the seat may become unsafe due to damage that is not be noticeable immediately. It should therefore be replaced.
- The safety of the seat can only be guaranteed by the manufacturer if it is issued by the original owner.
- We advise you strongly that not to use a second-hand product, because you are not sure if it is in good condition.
- The harness pads and crotch pad are important for the safety of your child, therefore use them for stature 40-105cm.
- Ensure that all luggage and objects likely to cause injury in the event of an accident are properly secured.
- Do not use this child seat in passenger seats are equipped with airbags.
- It is recommended that the car seats should not be used more than 5 years from the date of production. The properties of the products may deteriorate due to, for example, ageing of the plastic and this may not be visible.

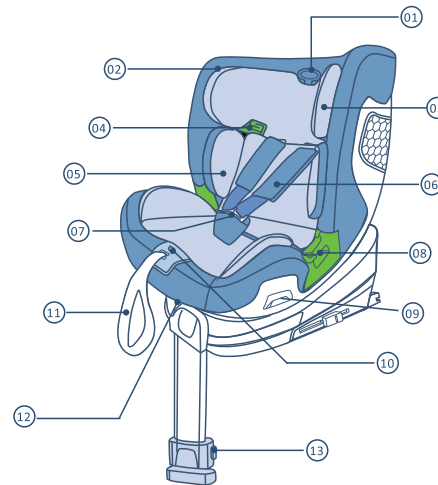
- The baby car seat must not be used without the cover. Please use an original cover, as the cover contributes to the safety of the seat.
- The seat must be secured with a seat belt or ISOFIX and support leg, even when in not on use. An unsecured seat may injure other passengers in an urgent stop.
- The rigid items and plastic parts of a child restraint must be located and installed that they are not liable, during everyday use of vehicle, to become trapped by a movable seat or in door of the vehicle.
- Ensure that the seat is not damaged by heavy luggage, adjustable seats or slamming the car door etc.
- No alterations may be made to the product as this could affect part or the overall safety of the seat.
- In hot weather the plastic and metal parts of the product will be hot. you should cover the seat when the car parked under the sun.
- In order to prevent damage to the cover, do not remove the product' s logo.
- Before the purchase, please check that the seat is properly secured in your car.
- Take a short break in long journey. So that your child has some time for the relaxation.
- Set a good example for yourself and always wear your seat belts.
- Tell your child that he/she should never play with the harness buckle.

- Any straps holding the restraint to the vehicle should be tight, that any straps restraining the child should be adjusted to the child's body, and that straps should not be twisted.
- Ensuring that any lap strap is worn low down, so the pelvis is firmly engaged.
- This product can not be used any more when it has been subject to violent stresses in an accident.
- Children can not be left in the product unattended.

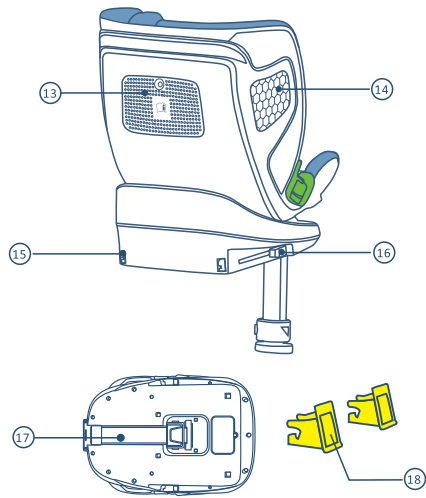
Questions

Contact your supplier or retailer if you wish to make a warranty claim or have any other questions. You car seat can be fixed safely on almost seats of the cars. However, some seats the belts are fixed so that proper installation is not possible, in that case, try another seat.

Know your car seat



- 01. Headrest Adjusting Loop
- 02. Cover
- 03. Headrest
- 04. Belt Guide
- 05. Inner Cushion
- 06. Shoulder Pad
- 07. Harness System
- 08. Lap Belt Guide
- 09. 360 Rotation System
- 10. Harness Adjusting Button
- 11. Harness Adjusting Strap
- 12. Recline handle
- 13. Support Leg Adjusting Button



- 13. Instruction Storage
- 14. Side Impact Protection
- 15. ISOFIX Connector
- 16. ISOFIX Release Button
- 17. Support Leg
- 18. ISOFIX Guide Cover

Car seat version

Product description:

Type	Stature	Facing direction	Installation	Approval type
WG03Pro	40-105cm	Rearward	ISOFIX + Support Leg + harness	I-SIZE
	76-105cm	Forward	ISOFIX + Support Leg + harness	
	100-150cm	Forward	Vehicle 3point belt + ISOFIX attachment	I-SIZE Booster seat
Vehicle 3 point belt				

Certification



...as a child safety seat installed in a vehicle

Angelbaby child safety seat	Tested and certified according to ECE R129			
	Stature	Rearward	Forward	Forward
WG03Pro		40-105cm	76-105cm	100-150cm

* ECE= European Standard for Safety Equipment


The child safety seat has been designed, tested and certified according to the requirements of the European Standard for Child Safety Equipment(ECE R129/03).

The seal of approval E(in a circle) and the approval number are located on the of approval label (sticker on the child safety seat) .

This approval will be invalidated if you make modifications to the child safety seat. Only the manufacturer is permitted to make modifications to the child safety seat.

Use in the vehicle

WARNING

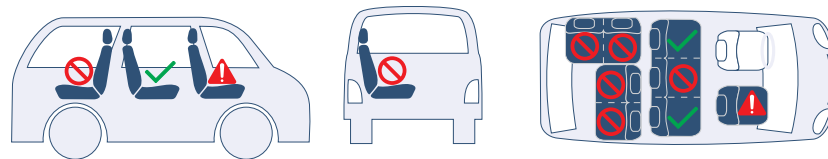
 Never use this child restraint system in seating positions where an active frontal airbag is installed.

An active frontal airbag may cause death or seriously injury of your child in an accident.

Please read the instructions carefully and keep safely for future reference. There is an instructions compartment in the back of the child car seat for storage of the instructions manual.



You can use your child car seat as follows:



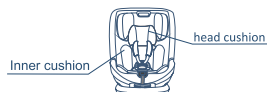
Securing your baby

Using Baby Insert

CAUTION

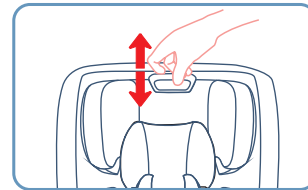
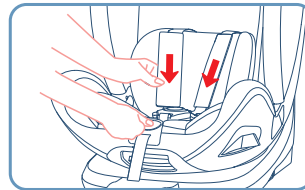
If your baby's stature is ≤ 75 cm, please install the Inner cushion+Head cushion on baby car seat.

If your baby's stature is $75 < x \leq 150$ cm, Please take out the Inner cushion+Head cushion on baby car seat.



- Always secure your baby in the car seat using the harness or belts.
- Never leave your baby unattended in the car seat when placing it on elevated surfaces (e.g. a table, nappy changing unit, etc.).
- Never allow the strap end to become caught in moving parts (e.g. automatic doors, escalators, etc.).
- Caution! The plastic parts of the car seat heat up in the sun, so that your baby may get burnt. Protect your baby and the car seat against intensive solar radiation (e.g. by putting a light cloth over the seat).
- Take your baby out of the car seat so often as possible to relieve its spine. We recommend frequent breaks during long journeys. Even outside of the car, please avoid leaving your baby in the car seat for too long.

Harness system & Headrest adjustment

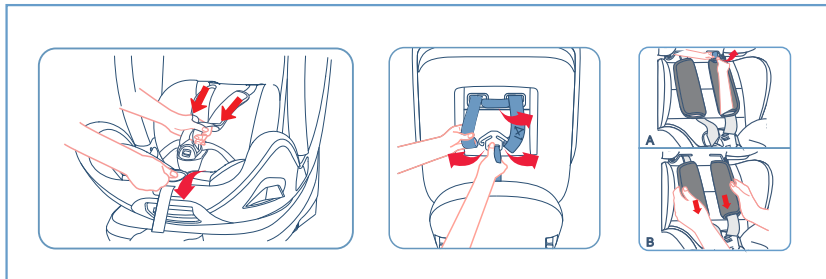


Loosen the shoulder straps by pressing the harness adjusting button and pull the shoulder straps as far forward as possible.

Pull the headrest adjusting loop to adjust the headrest upwards, Pull the headrest adjusting loop and push the headrest back to slide the headrest downwards

- Before installing the baby car seat into your vehicle, please adjust the headrest to the correct height for baby/child and check that it is properly engaged by lightly sliding the headrest down.
- There are 10 adjustable headrest positions. Please adjust the headrest height to close to your baby/child shoulder position, if at the middle of two positions, please use the higher position.

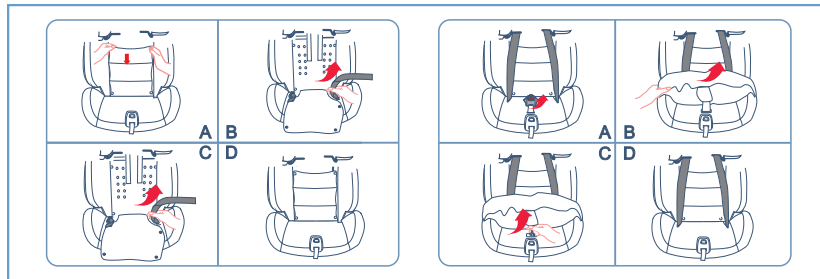
Removing the 5-point harness system



Loosen the 5-point harness of the child seat as much as possible by pressing the harness adjusting button and pull the strap belts as far as you can.

At the back of the seat, remove the harness straps from the metal yoke.

Remove the shoulder straps from the metal yoke. Pull the shoulder straps and belt pads towards you.

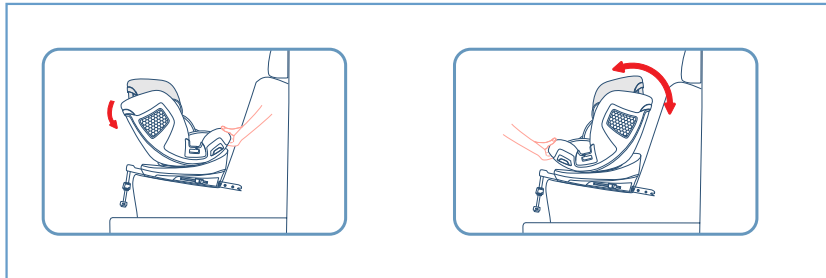


Find the metal plate of buckle latches under the memory foam, guide the metal plate through the slot and grasp it from the hole underneath the seat base to remove one side of harness strap; Repeat this step to remove the other side of harness strap.

Grasp the metal plate of buckle socket underneath the seat shell, turn it into vertical position. Push upward through the slot to remove it.

Reverse the above steps carefully to refit the 5-point harness. Ensure that all the straps are not twisted and they were correctly mounted in the slots. If you are in doubt, please contact the retailer or manufacturer for more information.

change the reclining positions



There are 5 recline positions of this product. To change the position, grasp the lever at the front of the seat, push or pull the seat into the desire position until you hear an audible sound "click" .

Rearward facing adjustment

-For stature 40-105cm with rearward facing, can use the reclining positions 1.2.3.4.5.

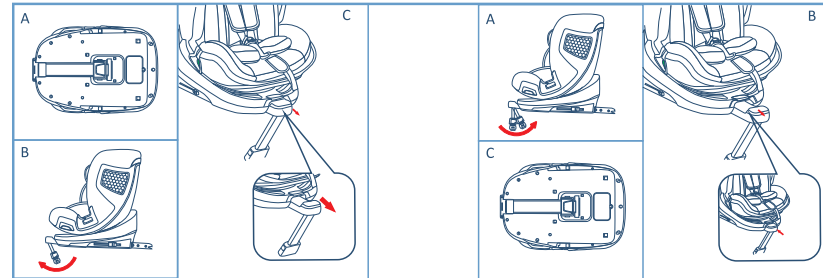
Forward facing adjustment

-For stature 76-105cm with forward facing, can use the reclining positions 1.2.3.4.5.

-For stature 100-150cm with forward facing, can only use the reclining positions 1.2.3.4.

Installation in the vehicle

Open support leg/Retract support leg



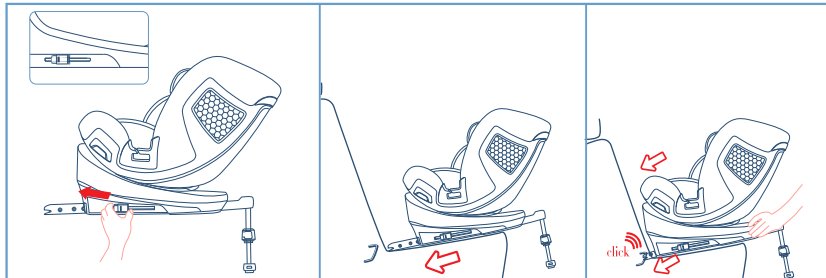
First, remove the supporting leg from the bottom of the seat. When the supporting leg is rotated outward to 45°, the supporting leg assembly can be pulled outward.

CAUTION

The seat can only be rotated when the supporting leg is extended.

Rotate the support leg back ward to 45° and push the support leg assembly inward until it is fully in place. Finally, tuck the support leg into the slot at the bottom of the seat.

Installation instruction for 40-105cm , Rearward facing , ISOFIX + Support Leg + harness

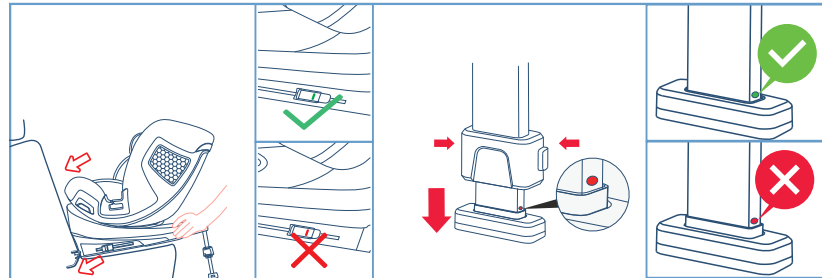


Unfold support leg until it locks in place. Press the ISOFIX release button to slide the ISOFIX connectors to the end.

CAUTION

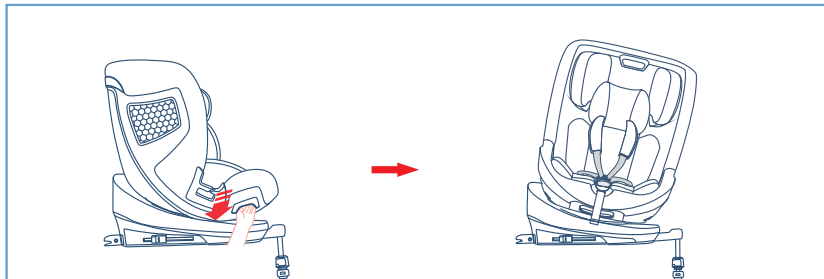
Please only move to next step when ISOFIX has been slid to the end with appearing the red marks.

Push the ISOFIX connectors directly into the anchorages until you hear an audible sound "click"



Grasp the seat body to check the seat if it is fastened tightly or shakes , meanwhile observe the ISOFIX red/ green indicator. If the seat shakes and the ISOFIX connectors are pulled out, please repeat the above steps and install it again.

Squeeze the support leg adjusting button, pull out the support leg until it rests firmly on the floor. Observe the ISOFIX red/green indicator to confirm the installation status.



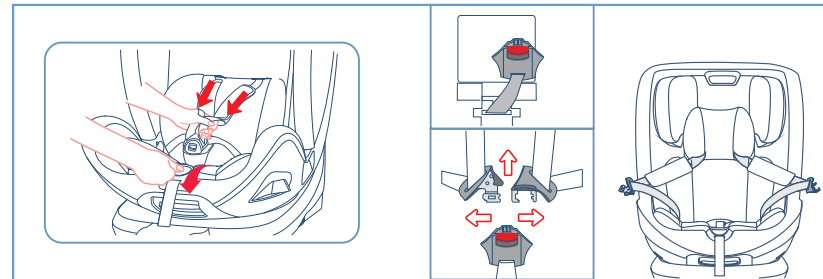
Pullout the rotating button, adjust the seat to sideward facing position allow access for placing a child on the seat.

CAUTION

Before every journey, make sure that the rotating part has been fully engaged.
Do not drive unless the seat is in forward or rearward facing position.

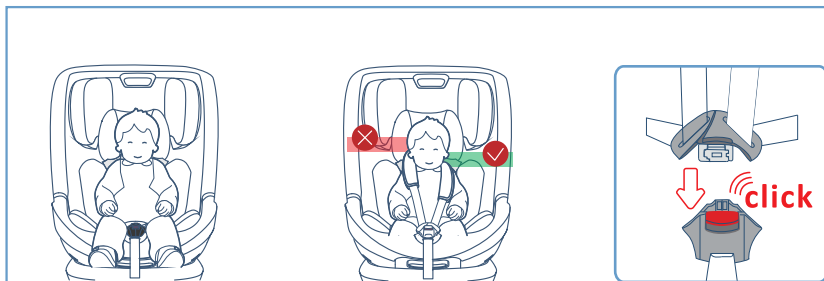
CAUTION

The seat can be 360°rotated without limiting (Any angles).



Loosen the shoulder straps by pressing the harness adjusting button and pull the harness shoulder as far forward as possible.

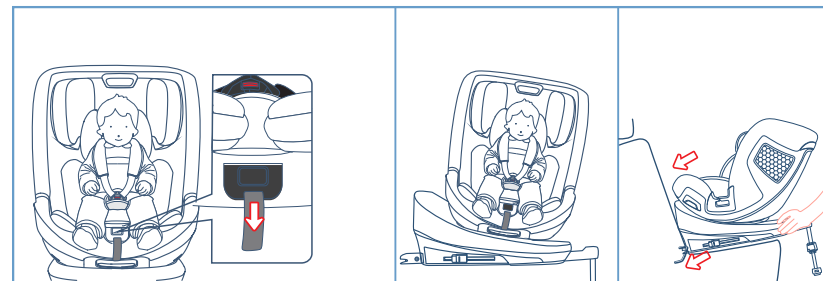
Open the buckle by pressing the red button, then fix the shoulder straps at the sides of the car seat.



Place child in the car seat.

Please note a correctly adjust headrest ensures optimal protection for your child in the safety seat; the headrest must be adjusted so that the shoulder straps are at the same level as your child's shoulders or slightly above.

Guide the two buckle latches together and engage them before putting them into the buckle, this should make a clicking sound.



Tighten the harness adjusting strap and make sure the harness is reasonably tight. It should restrain but not make the child uncomfortable.

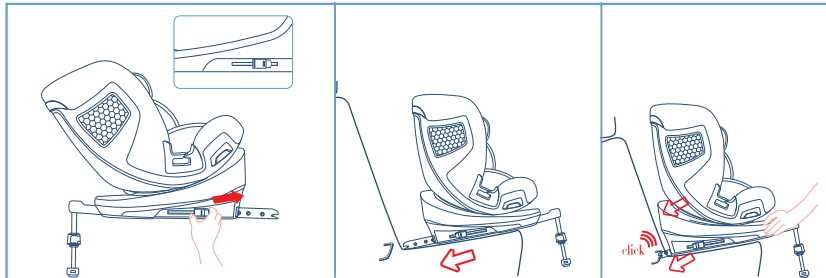
CAUTION

Please ensure that the lap strap is worn low down, so that the pelvis is firmly engaged. Pull on the strap until it lies flat and is close against your child's body. The straps should be correctly adjusted and ensure they are not twisted.

Pull the strap end straight towards you ,not upwards or downwards. Please pay attention to the strap end. While travelling (especially outside the car) is should always be attached to the cover.

Pull out the rotating button to adjust the seat direction. Only rearward facing position is available for child before 15months.

Installation instruction for Stature 76-105cm, Forward facing , ISOFIX + Support Leg + harness

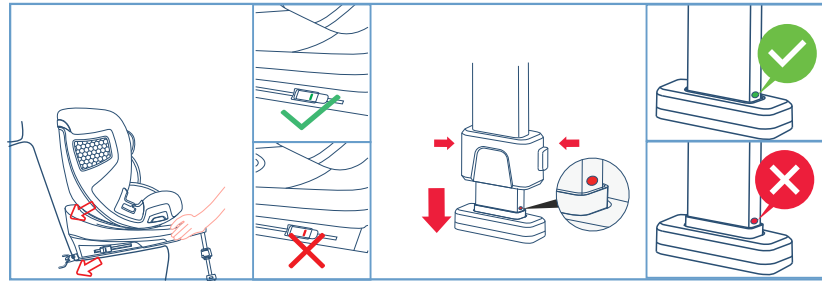


Unfold support leg until it locks in place. Press the ISOFIX release button to slide the ISOFIX connectors to the end.

CAUTION

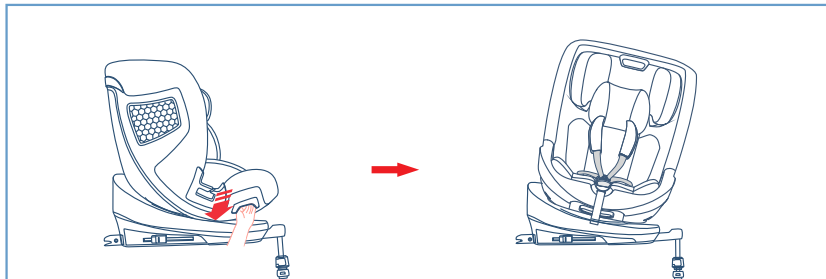
Please only move to next step when ISOFIX has been slid to the end with appearing the red marks.

Push the ISOFIX connectors directly into the anchorages until you hear an audible sound "click"



Grasp the seat body to check the seat if it is fastened tightly or shakes , meanwhile observe the ISOFIX red/ green indicator. If the seat shakes and the ISOFIX connectors are pulled out, please repeat the above steps and install it again.

Squeeze the support leg adjusting button, pull out the support leg until it rests firmly on the floor. Observe the ISOFIX red/green indicator to confirm the installation status.



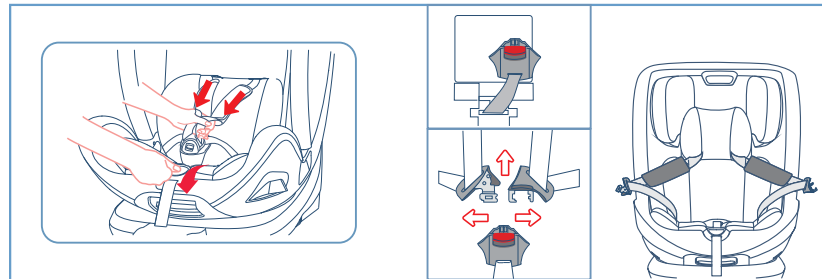
Pullout the rotating button, adjust the seat to sideward facing position allow access for placing a child on the seat.

CAUTION

Before every journey, make sure that the rotating part has been fully engaged.
Do not drive unless the seat is in forward or rearward facing position.

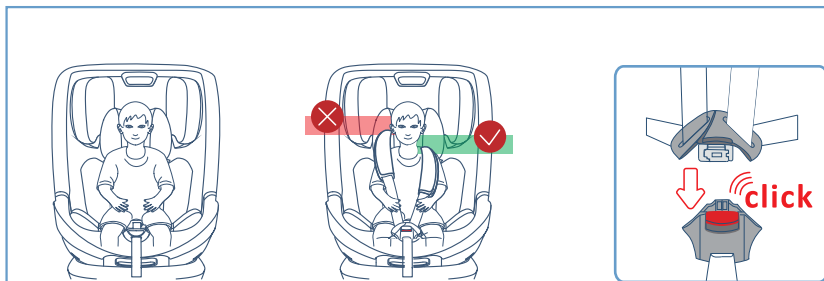
CAUTION

The seat can be 360°rotated without limiting (Any angles).



Loosen the shoulder straps by pressing the harness adjusting button and pull the harness shoulder as far forward as possible.

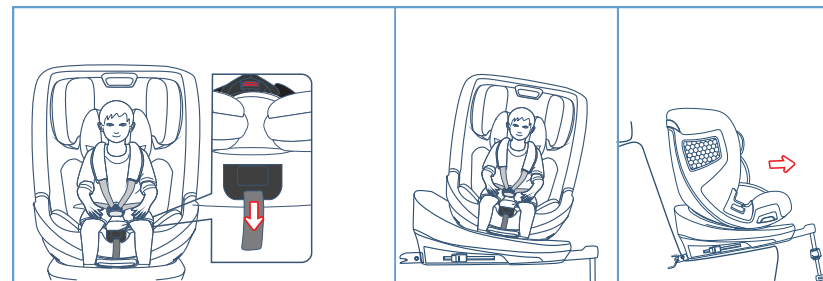
Open the buckle by pressing the red button, then fix the shoulder straps at the sides of the car seat.



Place child in the car seat.

Please note a correctly adjust headrest ensures optimal protection for your child in the safety seat; the headrest must be adjusted so that the shoulder straps are at the same level as your child's shoulders or slightly above.

Guide the two buckle latches together and engage them before putting them into the buckle, this should make a clicking sound.



Tighten the harness adjusting strap and make sure the harness is reasonably tight. It should restrain but not make the child uncomfortable.

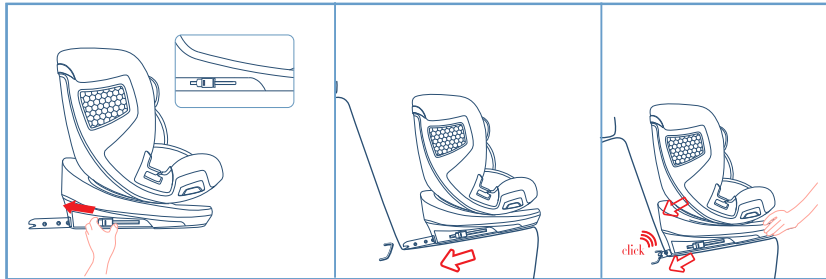
CAUTION

Please ensure that the lap strap is worn low down, so that the pelvis is firmly engaged. Pull on the strap until it lies flat and is close against your child's body. The straps should be correctly adjusted and ensure they are not twisted.

Pull the strap end straight towards you ,not upwards or downwards Please pay attention to the strap end. While travelling (especially outside the car) is should always be attached to the cover.

Press the rotating button to adjust the seat direction. Both forward and rearward facing positions are available for child's stature 76-105cm.

Installation instruction for Stature 100-150cm, Forwardfacing, ISOFIX attachment+Vehicle 3 point belt.



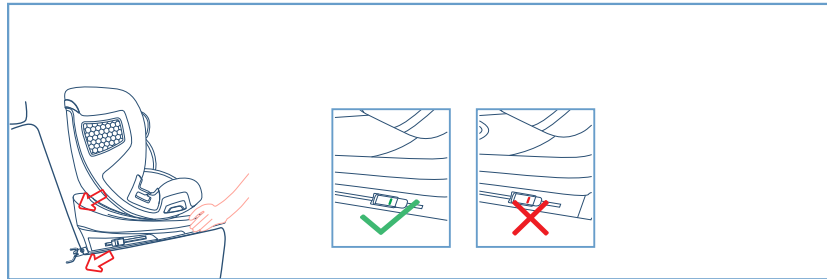
Unfold the support leg until it hides in place. Press the ISOFIX release button to slide the ISOFIX connectors to the end.

CAUTION

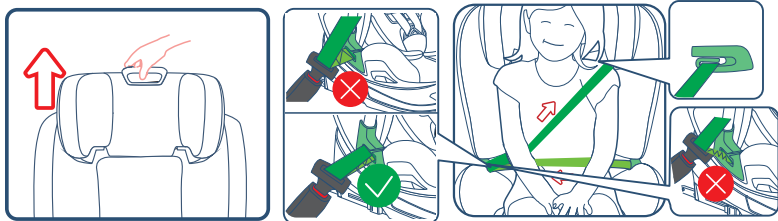
Please only move to next step when ISOFIX has been slid to the end with appearing the red marks.

Push the ISOFIX connectors directly into the anchorages until you hear an audible sound “click”

For stature 100-150cm with forward facing, can't use the support leg.



Grasp the seat body to check the seat if it is fastened tightly or shakes , meanwhile observe the ISOFIX red/ green indicator. If the seat shakes and the ISOFIX connectors are pulled out, please repeat the above steps and install it again.

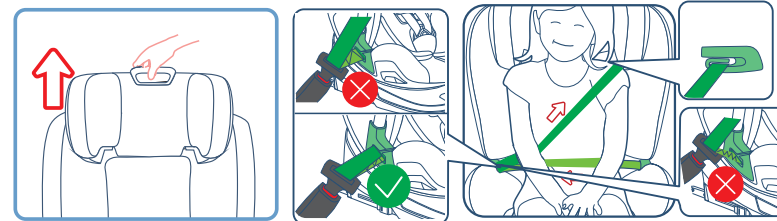


Adjust the height of the headrest to suit your child. Put the vehicle belt through the belt guide. Place your child into the baby car seat and let the vehicle belt pass the belt guide. Fasten the vehicle belt with an audible sound "click".

CAUTION

Make sure the lap strap is worn low down, so that the pelvis is firmly engaged. Pull on the strap until it lies flat and is close against your child's body. The straps should be correctly adjusted and ensure they are not twisted.

Installation instruction for Stature 100-150cm, Forwardfacing, Vehicle 3 point belt.



Adjust the height of the headrest to suit your child. Put the vehicle belt through the belt guide. Place your child into the baby car seat and let the vehicle belt pass the belt guide. Fasten the vehicle belt with an audible sound "click".

CAUTION

Make sure the lap strap is worn low down, so that the pelvis is firmly engaged. Pull on the strap until it lies flat and is close against your child's body. The straps should be correctly adjusted and ensure they are not twisted.

Maintenance

1. Washing

- The covers and the shoulder pads can be removed for washing under 30°C clean water;
- Clean the shell using a damp cloth.
- Clean the buckle using a damp cloth.
- Remove off the harness system before washing by soap water.

2. Safety Self-Checking

- Checking harness system on time to make sure the safety, once find the broken, please contact manufacturer.
- If you have trouble on installation, please contact manufacturer.
- Checking car belt on time to make sure the safety, once find the broken, please contact manufacturer.

3. Handle after accident

After colliding by accident, please change baby car seat. Or contact manufacturer.

Service

Repair condition.

Repair service is according to normal operation. Under the quality problems by production, we can supply the following service:

- Repair all life;
- In 30days after buying, buyer can choose to return of goods, change goods or repair. Any questions, please contact manufacturer.

Any of below conditions, we can not repair by charge in 30days after sales.

- Repair by other people not be authorized by manufacturer;
- Not installation, using and maintenance according to instruction;
- Using other supplier spare parts cause quality problems;
- Normal function problems by natural reason such as wet, abrasion, aging.

Notice

This is an "I-Size" Child Restraint System. It is approved to Regulation No.129, for use in,"I-Size compatible" vehicle seating positions as indicated by vehicle manufacturers in the vehicle users' manual. If in doubt, consult either the child restraint manufacturer or the retailer.

Notice

This is a I-Size booster seat Enhanced Child Restraint System .It is approved according to UN Regulation No.129,for use primarily in"I-Size seating positions" as indicated by vehicle manufacturers in the vehicle user's manual.

If in doubt, consult either the Enhanced Child Restraint System manufacturer or the retailer.

IMPORTANT

DO NOT USE FORWARD FACING BEFORE THE CHILD ' S AGE EXCEEDING 15MONTHS

Only suitable for use in the listed vehicles fitted with 3 point belt which is approved to ECE Regulation No.16.

Do not use them in seating positions where there is active airbag installed.