



Life is Precious.
Be Safe.

Koopers Distribution Sdn Bhd

☎ 03-78324338

🌐 www.koopers.co

📘 www.facebook.com/koopersmalaysia

✉ sales@koopers.co

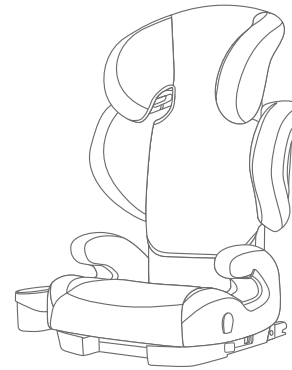
📍 18-1, Jalan Bulan U5/BM, Section U5, Bandar Pinggiran Subang,
40150 Shah Alam, Selangor
Malaysia



Life is Precious.
Be Safe.

Nex+

Group II, III (15-36kg)



Instruction Manual

The child restraint is approved to UN ECE regulation 44/04.

Please read all the instruction in this manual before installing and using the product

1. Important.....	03
2. Use in the vehicle.....	04
3. Know your child seat.....	05
4. Adjusting your child seat.....	06
4.1 Adjusting the seating position of the child seat...06	
4.2 Adjusting the headrest.....	06
5. Installation with 3-point safety belt.....	07
6. Installation with 3-point safety belt in combination with Smart fix connectors.....	07
7. Securing your child.....	08
8. Remove and refitting of seat covers.....	10
9. Cleaning.....	10
10. Warranty.....	11

1. Important

Before use our product, please read the instruction manual carefully, the product is a safety product and is only safe when used in accordance with the instruction manual.

- For the future use of the seat, it is important that you keep the instruction manual carefully.
- Never leave your child unattended in the car.
- The child seat should be changed when it has been subject to violent stresses in an accident.
- We advise you strongly that not to use a second-hand product, because you are not sure what has happened to it.
- The belt pads are important for the safety of your child, therefore use them at all the time.
- Ensure that all luggage and objects likely to cause injury in the event of an accident are properly secured.
- The moving parts of the child seat should not be lubricated in any way.
- The child seat shall not be used without the cover; The seat cover should not be replaced with any other than the one recommended by the manufacturer.
- The seat must be secured with a seat belt, even when it is not on use. An unsecured seat may injure other passengers in the car in an urgent stop.
- It is danger to make any alterations or additions to the device without the approval of the Type Approval Authority, and it is also danger not following closely the installation instructions.
- The rigid items and plastic parts of a child restraint shall be so located and installed that they are not liable, during everyday use of the vehicle, to become trapped by a movable seat or in a door of the vehicle
- In hot weather, the plastic and metal parts of the product will be hot. You should cover the seat when the car parked under the sun.
- Any straps holding the restraint to the vehicle should be tight; restraining the child should be adjusted to the child's body, and should not be twisted.

- It is important to ensure that any lap strap is worn low down, so that the pelvis is firmly engaged, shall be stressed.
- It is extremely danger to use any load bearing contact points other than those described in the instructions and marked in the child seat.
- Use the seat even in a short journey, as this is when most accidents occur.
- Take a short break in long journey. So that your child has some time for the relaxation.
- Set a good example yourself and always wear your seat belt.
- Tell your child that he/she should be never play with the belt buckle.

2. Use in the vehicle

The child seat is approved for two different methods of installation.

- With vehicle's 3-point safety belt
- With vehicle's 3-point safety belt in combination with smart fix connectors locking into vehicle's ISOFIX lower anchorages

Important:

- Always used in forward facing passenger seat. We do not recommend to use the child seat in the front passenger seat.
- The safety belt must be approved to ECE R16 or a comparable standard.
- Never use the child seat in the passenger seat equipped with 2-point belt set.



Use with the vehicle's 3-point seat belt

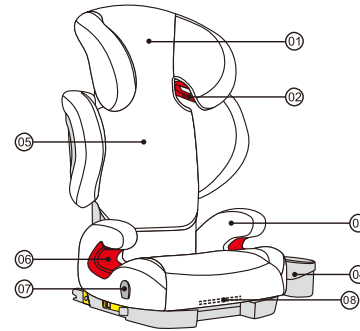


Use with 3-point safety belt in combination with Smart Fix

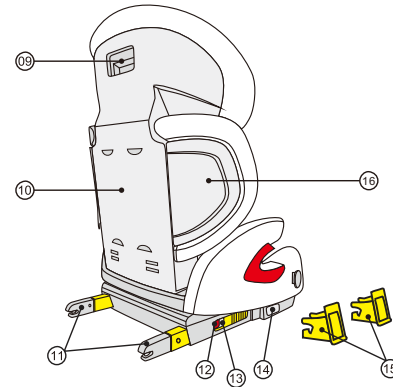


DO NOT use with 2-point belt.

3. Know your child seat



- Headrest
- Diagonal belt guides and locks
- Armrests
- Cup holder
- Backrest
- Lap belt guides
- Cup holder retainer
- Recline handle

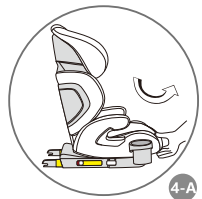


- Headrest adjustment handle
- Seat back
- Smart fix connectors
- Smart fix indicators (green/red)
- Smart fix release button
- Smart fix adjustment button
- Smart fix insertion guides
- Side wings

Adjusting your child seat

4. Adjusting your child seat

4.1 Adjusting the seating position of the child seat



The child seat can be used in multi seating positions for use of all groups. Pull the recline handle, adjust the seat shell forwards or backwards. Release the handle in the required position and push until you hear a distinct click.(4-A)

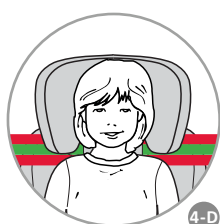
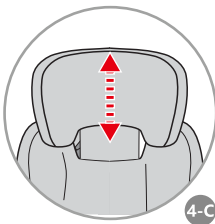
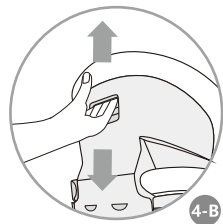
4.2 Adjusting the headrest

A correctly adjusted headrest ensures that the diagonal seat belt section is optimally positioned, and gives your child the optimal protection.

The headrest must be adjusted so that there is a space two fingers wide between the headrest and your child's shoulders.

To adjust the height of the headrest to fit your child:

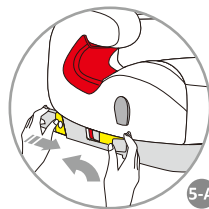
1. Reach into the adjustment handle on the back of the headrest and pull it upwards . This unlocks the headrest. (4-B)
2. You can now move the unlocked headrest to the desired height. As soon as you release the adjustment handle, the headrest will lock into place. (4-C)
3. Place the child seat on the vehicle seat. Have your child sit down in the child seat and check the height. Repeat this process until the headrest is at the optimal height. (4-D)



Installation in the vehicle

5. Installation with 3-point safety belt

1. Please make sure that the both smart fix connectors are stowed in its original position(the most inside position). If not, please pull&hold the smart fix adjustment button, meantime push back the smart fix arms back into the seat base. Repeat the above, to pull back the arm in the other side.(5-A)
2. Place the child seat on the vehicle seat, make sure the backrest of child seat is flush with backrest of the vehicle seat. Tips: if the headrest of the vehicle seat gets in the way, please remove it or turn it in other way.(5-B)
3. Follow the steps in section 7 'Securing your child ' to finish the installation.



6. Installation with 3-point safety belt in combination with Smart fix connectors

Please read the instructions on the use of child restraint systems described in your vehicle owner's manual. Find the ISOFIX anchorage points in the vehicle seat.

Tips: The ISOFIX anchorage points are located between the surface and the backrest of the vehicle seat.

1. Insert two Smart Fix guides to the ISOFIX lower anchorages respectively. (6-A/6-B) Smart Fix guides make it easier to install using the Smart Fix connectors and prevent damage to the upholstery.
2. Pull the Smart Fix extend levers on the both sides of seat base to stretch the two arms of Smart Fix connectors respectively. (6-C)
3. Line up the Smart Fix connectors with the Smart Fix guides. Attach the two Smart Fix

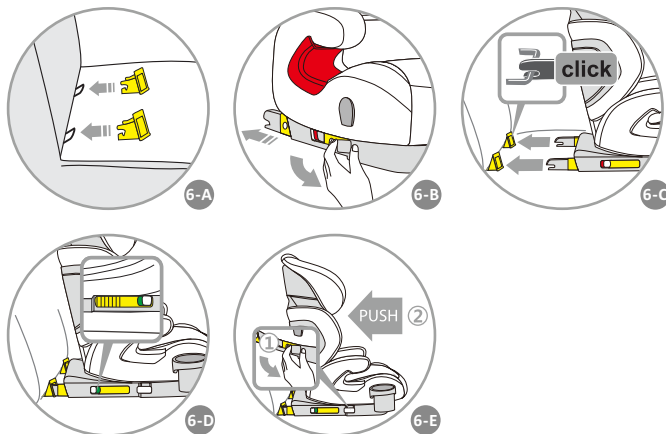
connectors to the two anchorage points on the vehicle seat respectively. You will hear two sound of “Clicks”. And check the Smart Fix indicator on each side turns to green. (6-D)

4. Pull the Smart Fix extend levers at same time to push the child seat as far back as it will go. Make sure the back of child seat is against the backrest of vehicle seat firmly. (6-E)

5. Follow the steps in section 7 ‘Securing your child’ to finish the installation.

Unfastening your child seat

To unfastening your child seat, please pull the Smart fix release buttons on both sides



7. Securing your child

Important:

-Before securing your child in the child seat, please make sure the headrest is adjusted to the correct position (see section 4.2)

-Check your vehicle’s manual to see if your vehicle is equipped with ISOFIX lower anchorages; choose one method of installation in the vehicle, either section 5 or 6 was followed correctly.

1. Have your child sit down in the child seat, and slide the diagonal belt guide locking piece to open it. Pull out the safety belt and guide it to in front of your child to the seat buckle. (7-A)

2. Buckle it up with an audible ‘Chick’. (7-B)

3. Guide the lap belt and one end of diagonal belt to the belt guides under the both armrests. (7-C)

4. Insert the other end of the diagonal belt into the belt guide under headrest, that slide the locking piece to close it. (7-D)

5. Remove all the slackness of safety belts to the retractor. (7-E)

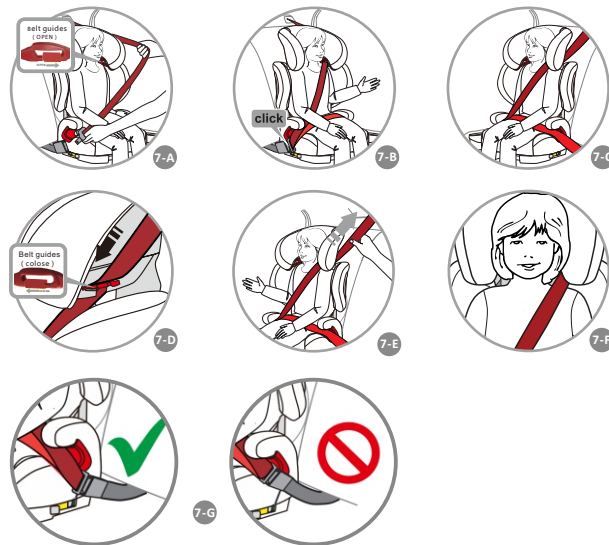
Checklist before you go:

-The diagonal belt must run over in the middle of your child’s shoulder, not in his or her neck. (7-F)

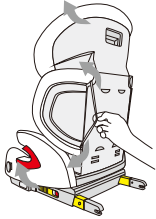
-The lap belt must lie as low as possible on your child’s pelvis on both sides.

-No parts of belt should be twisted.

-Make sure the safety buckle is not rested on the lap belt guide. (7-G)



8. Remove and refitting of seat covers



1. Unhook the elastic loops on the back of headrest and backrest to remove covers from the headrest and side wings
2. Unhook the cover loops at the bottom of seat base to pull off the cover from it .

Re-fitting the cover

Proceed in reverse order to put on the cover.

9. Cleaning

The child seat must not be used without the seat cover.

The cover can be washed with a mild detergent using the washing machine's cycle for delicate items (30°C).

The colors of the cover may fade if it is washed at more than 30°C. Do not spin, and never tumble dry in an electric clothes dryer (the fabric may separate from the padding).

The plastic parts can be cleaned using soapy water. Do not use harsh cleaning agents (such as solvents).



- Check that you have secured your baby child seat with the seat belt.
- Check that both Smart Fix connectors are properly attached to the anchorage points. Both Smart Fix indicators are green.

If you have any questions, please contact your retailer or manufacturer.

10. Warranty

- The warranty period starts from the date of purchase and is valid for a period of 12 months.
- The warranty is only applicable to the original owner and is not transferable.
- The warranty is only applicable to products that have not been adapted by the user.
- In the case of any defects, the owner is required to return the product to the retailer. If the retailer can not solve the problem, he must return the product, complete with a clear description of the complaint and a validated purchase receipt to the manufacturer. Exchanger or return can not be demanded.
- Repairs do not constitute an extension to the warranty term.
- The manufacturer is not liable for any damages other than those on products supplied.

No warranty is given if:

- The product is not supplied complete with the validated purchase receipt to the manufacturer.
- Defects are caused by misuse or maintenance which differ from that indicated in the user manual.
- Repairs are carried out by third parties.
- Defects are caused by neglect.
- If there is normal wear and tear which may be expected from everyday use.
- The stated warranty terms and conditions have not been satisfied.