

CHILD RESTRAINT SYSTEM INFORMATION

MODEL **S65 (MUGOFIX 360)**

GROUP **0+ / 1 / 2 / 3**

BRAND **KOOPERS**



0040075

UNR TESTING INFORMATION

| | |
|----------------------|--------------------------------|
| Regulation | ECE R44/04 |
| Approval Number | 0411181 |
| CTA Reference Number | JPJ.BKA.600-3/3/33 Jld 51 (30) |
| CTA Approval Date | 23 DECEMBER 2019 |

INSTALLATION TYPE

| Installation Type/ Direction | Seatbelt | ISOFIX | Top Tether | Support Leg |
|------------------------------|----------|--------|------------|-------------|
| Rear Facing | ✓ | ✓ | N/A | ✓ |
| Forward Facing | ✓ | ✓ | N/A | ✓ |

PHOTOS



CHILD RESTRAINT SYSTEM INFORMATION

COLOUR VARIANT



INSTALLATION

Group

Installation Method

0/0+
Up to 83cm
0-13kg

5. INSTALLED IN CAR

5.1 Installed in Car with Belt

5.1.1 Installed in Rearward Facing Position with Belt

5.1.1.1 Group 0+(0-13KG)

Pull out the support leg, adjust it to the maximum angle.

Adjust the length of the support leg so that it is in full contact with the ground of the vehicle (Display window turns into green color).

Pull the vehicle seatbelt and pass the lap belt section through the belt guidance^③ and under the sleeping cushion.

Pass the diagonal seat belt section through the belt guidance^②

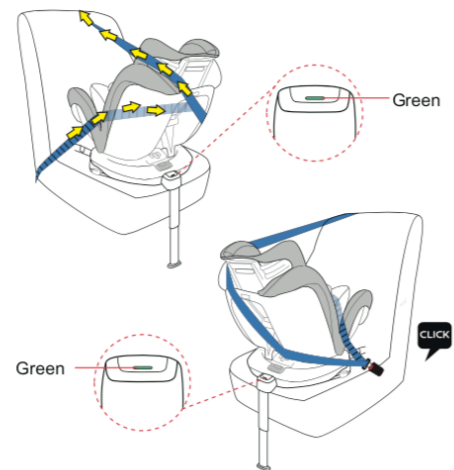
Fasten the seat belt and pull it tight, ensuring that the seat belt is not twisted.

NOTE: For children of this size, the child seat must only be installed in the rearward facing position and at a maximum angle of inclination (lying level). To make sure that the car seat has been installed correctly, please shake it before use.

19

DO NOT twist the belt!

Ensure that the buckle tongues are properly locked into the vehicle seat buckle - you will hear an audible **CLICK!**



5.2 Installed in Car with ISOFIX connector

5.2.1 Installed in Rearward Facing Position with ISOFIX connector and Support Leg; Group 0 I(0-18KG)

Put the ISOFIX insert guide into the two ISOFIX attachment points of your vehicle.

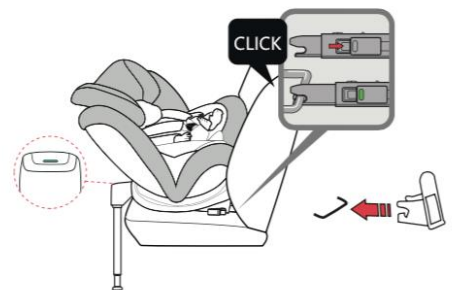
If you don't have the ISOFIX insert guide, please ignore this step.

NOTE: The ISOFIX attachment points are located between the surface and the backrest of the vehicle seat.

Press the ISOFIX button to pull out the two locking arms from the base bottom. Pull the locking arm to and fro until you hear an audible **CLICK** which indicates they are fully engaged. And on both sides of the locking arms' button turn into green safety color.

Pull out the support leg, adjust it to the maximum angle.

Adjust the length of the support leg so that it is in full contact with the ground of the vehicle (Display window turns into green color).



22

CHILD RESTRAINT SYSTEM INFORMATION

1
71cm and above
9-18kg

BELT

5.1.2 Installed in Forward Facing Position with Belt

5.1.2.1 Group I (9-18KG)

Place the child seat forward facing on the vehicle seat (in the direction of travel).

Pull out the support leg, adjust it to the maximum angle.

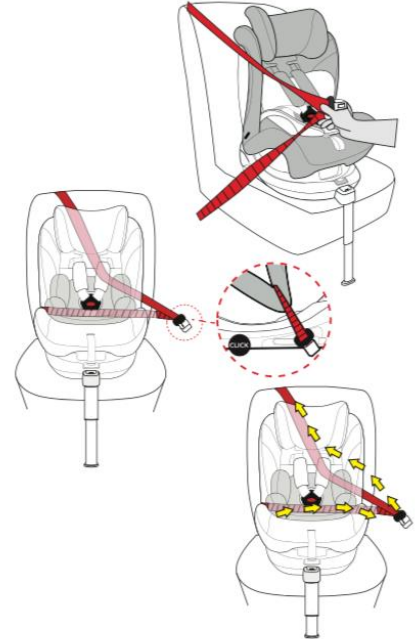
Adjust the length of the support leg so that it is in full contact with the ground of the vehicle (Display window turns into green color).

Pull the diagonal belt section through belt guidance^②. Place the lap belt section in the belt guidance^③.

Pull out safety belt from the back to the side, lap belt section respectively from the belt guidance^③ of the base. One side of the diagonal belt through the backrest and the belt guidance^③, another side along the upper inside.

Using your knee to press down on the child seat, tighten the vehicle seat belt as follows:

Pull on the lower part of the diagonal seat belt section near the vehicle seat buckle to tighten the lap belt section.



ISOFIX

5.2.2 Installed in Forward Facing Position with ISOFIX

connector and Support Leg, Group I (9-18KG)

Put the ISOFIX insert guide into the two ISOFIX attachment points of your vehicle.

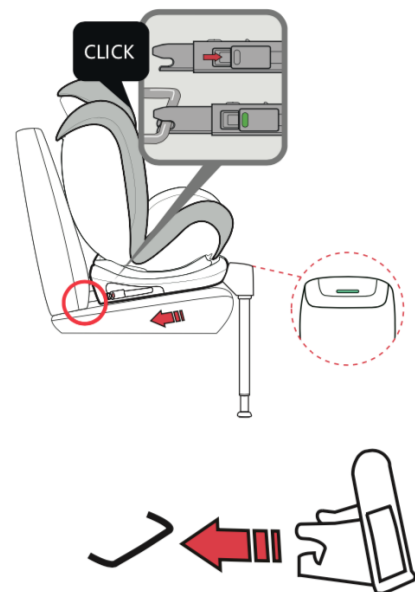
If you don't have the ISOFIX insert guide, please ignore this step.

NOTE: The ISOFIX attachment points are located between the surface and the backrest of the vehicle seat.

Press the ISOFIX button to pull out the two locking arms from the base bottom. Pull the locking arm to and fro until you hear an audible **CLICK** which indicates they are fully engaged. And on both sides of the locking arms' button turn into green safety color.

Pull out the support leg, adjust it to the maximum angle.

Adjust the length of the support leg so that it is in full contact with the ground of the vehicle (Display window turns into green color).



CHILD RESTRAINT SYSTEM INFORMATION

BELT

5.1.2.2 Group II III (15-36KG)

NOTE: When you use this safety car seat in Group II III, please remove the 5-point harness, sleeping pads and the triangle pads refer to Chapter 4.7. Place the child seat forward facing on the vehicle seat (in the direction of travel). Adjust the support leg upwards to the shortest, make it hanging. Ensure that the support leg shows red indicator.

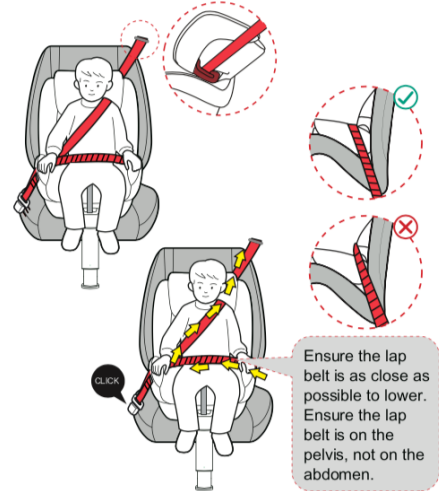
First pull out the belt from the belt ALR. Diagonal belt through the same side of Guidance ①, lap belt through the same side of Guidance ③, then pull the diagonal belt and lap belt together through another side of Guidance ③.

NOTE: Make sure that the diagonal seatbelt section runs over your child's shoulder bone, and not in front of his or her neck.

Lock the tip of the buckle into the vehicle seat buckle with a CLICK noise. Follow the direction of arrow to tighten belt, and put redundant belt into cloth cove. Shake the child safety car seat to make sure it is securely attached

21

CAUTION! The diagonal seat belt section must run diagonally backward. You can adjust the course of the belt with your vehicle's adjustable belt deflector on both sides.



ISOFIX

5.2.3 Installed in forward facing position with ISOFIX connector and belt. Group II III(15-36KG)

NOTE: When you use this safety car seat in group II,III, please remove the 5-point harness, sleeping pads and the triangle pads refer to Chapter 4.7 Place the child seat forward facing on the vehicle seat (in the direction of travel). Put the ISOFIX insert guide into the two ISOFIX attachment points of your vehicle. If you don't have the ISOFIX insert guide, please ignore this step.

NOTE: The ISOFIX attachment points are located between the surface and the backrest of the vehicle seat.

Press the ISOFIX button to pull out the two locking arms from the base bottom. Pull the locking arm to and fro until you hear an audible CLICK which indicates they are fully engaged. And on both sides of the locking arms' button turn into green safety color.

Adjust the support leg upwards to the shortest, make it hanging. Ensure that the support leg shows red indicator.

First pull out the belt from the belt ALR. Diagonal belt through the same side of Guidance ①, lap belt through the same side of Guidance ③, then pull the diagonal belt and lap belt together through another side of Guidance ③.

NOTE: Make sure that the diagonal seatbelt section runs over your child's shoulder bone and not in front of his or her neck.

Lock the tip of the buckle into the vehicle seat buckle with a CLICK noise. Follow the direction of arrow to tighten belt, and put redundant belt into cloth cover. Shake the child safety car seat to make sure it is securely attached.

2

100cm and above
15-25kg

CHILD RESTRAINT SYSTEM INFORMATION

3
Up to 135cm
25-36kg

BELT

5.1.2.2 Group II III (15-36KG)

NOTE: When you use this safety car seat in Group II III, please remove the 5-point harness, sleeping pads and the triangle pads refer to Chapter 4.7. Place the child seat forward facing on the vehicle seat (in the direction of travel). Adjust the support leg upwards to the shortest, make it hanging. Ensure that the support leg shows red indicator.

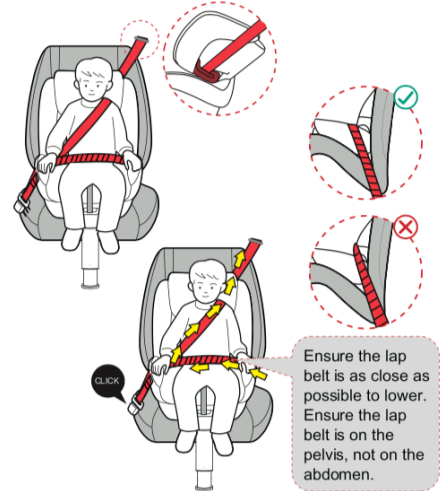
First pull out the belt from the belt ALR. Diagonal belt through the same side of Guidance ①, lap belt through the same side of Guidance ③, then pull the diagonal belt and lap belt together through another side of Guidance ③.

NOTE: Make sure that the diagonal seatbelt section runs over your child's shoulder bone, and not in front of his or her neck.

Lock the tip of the buckle into the vehicle seat buckle with a CLICK noise. Follow the direction of arrow to tighten belt, and put redundant belt into cloth cove. Shake the child safety car seat to make sure it is securely attached

21

CAUTION! The diagonal seat belt section must run diagonally backward. You can adjust the course of the belt with your vehicle's adjustable belt deflector on both sides.



ISOFIX

5.2.3 Installed in forward facing position with ISOFIX connector and belt. Group II III(15-36KG)

NOTE: When you use this safety car seat in group II,III, please remove the 5-point harness, sleeping pads and the triangle pads refer to Chapter 4.7 Place the child seat forward facing on the vehicle seat (in the direction of travel). Put the ISOFIX insert guide into the two ISOFIX attachment points of your vehicle. If you don't have the ISOFIX insert guide, please ignore this step.

NOTE: The ISOFIX attachment points are located between the surface and the backrest of the vehicle seat.

Press the ISOFIX button to pull out the two locking arms from the base bottom. Pull the locking arm to and fro until you hear an audible CLICK which indicates they are fully engaged. And on both sides of the locking arms' button turn into green safety color.

Adjust the support leg upwards to the shortest, make it hanging. Ensure that the support leg shows red indicator.

First pull out the belt from the belt ALR. Diagonal belt through the same side of Guidance ①, lap belt through the same side of Guidance ③, then pull the diagonal belt and lap belt together through another side of Guidance ③.

NOTE: Make sure that the diagonal seatbelt section runs over your child's shoulder bone and not in front of his or her neck.

Lock the tip of the buckle into the vehicle seat buckle with a CLICK noise. Follow the direction of arrow to tighten belt, and put redundant belt into cloth cover. Shake the child safety car seat to make sure it is securely attached.