



Life is Precious. Be Safe.

Koopers Distribution Sdn Bhd

☎ 03-78324338

🌐 www.koopers.co

📘 www.facebook.com/koopersmalaysia

✉ sales@koopers.co

📍 18-1, Jalan Bulan U5/BM, Section U5, Bandar Pinggiran Subang,
40150 Shah Alam, Selangor
Malaysia



Life is Precious.
Be Safe.

Lambada

Group



0-36kg

0-12years old



Menu**1. Structure name****2. Notes****3. Safety instructions****4. Use in the vehicle****5. Approval****6. Care and maintenance**

6.1 How to use the harness buckle

6.2 Care for the harness buckle

6.3 Remedy

6.4 Cleaning the harness buckle

6.5 Removing 5-point harness

6.6 Removing the fabric cover

6.7 Adjust the angle of child safety car seat

6.8 Adjust the length of harness

6.9 Adjust the height of harness

6.10 Adjusting the headrest in 5-point harness

installation

6.11 Adjusting the headrest in Vehicle belt installation

7. Installation

7.1 Group 0 +(0–13kg) installed in the rearward facing position with vehicle belt+5 point harness

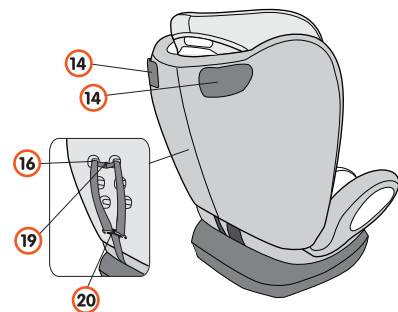
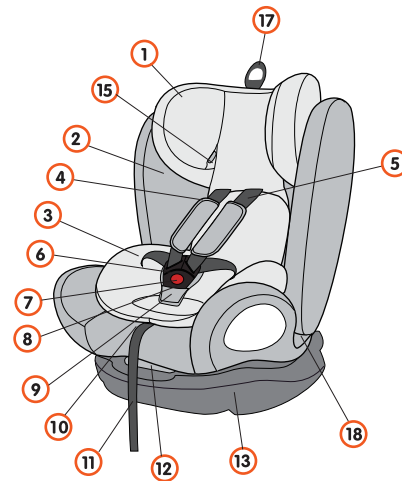
7.2 Group 1(9–18kg) installed in the forward facing position with vehicle belt+5 point harness

7.3 Group 2, 3(15–36kg) installed in the forward facing position with vehicle belt

8. Removal of the child seat**9. Daily care and instructions**

9.1 Daily Care

9.2 Cleaning

1. Structure name

NO.	Name	NO.	Name
1	Headrest	12	Reline handle
2	Seat cover	13	Base
3	Sleeping pad	14	Blue guidance
4	Shoulder pad	15	Belt guidance
5	Shoulder belt	16	Shoulder belt slots
6	Buckle latch	17	Headrest height
7	Red button	18	Red Belt Guidance
8	Buckle	19	Connector
9	Crotch pad	20	Metal Link
10	Press button		
11	adjustment		

2. Notes

This is a "Universal" child restraint. It is approved to Regulation No. 44, 04 series of amendments,

for general use in vehicles and it will fit most, but not all, car seats.

A correct fit is likely if the vehicle manufacturer has declared in the vehicle handbook that the vehicle is capable of accepting a "Universal" child restraint for this age group.

This child restraint has been classified as "Universal" under more stringent conditions than those which applied to earlier designs which do not carry this notice.

If in doubt, consult either the child restraint manufacturer or the retailer.

Only suitable if the approved vehicles are fitted with 3 point with retractor safety-belts, approved to UN/ECE Regulation No. 16 or other equivalent standards.

2.1 This is child restraint system ,usually called child safety car seat.

multi-color can choose

2.3 Strength side protection of headrest, shoulder belt has 3 level adjustment

3. Safety instructions:

!!!!Take the time to carefully read through these instructions, and always keep them ready to hand in the designated pocket on the child seat.

!!!!For the protection of all vehicle occupants

In the case of an emergency stop or an accident, persons or objects which are not properly secured in the car can cause injury to other vehicle occupants. For this reason, please always check that:

- The backrests of the vehicle seats are locked (e.g. that the latch on a folding rear seat bench is engaged).
- All heavy or sharp-edged objects in the vehicle (e.g. on the parcel shelf) are secured.
- All persons in the vehicle have their seat belts fastened.
- The child safety seat is always secured in the car

via the 3-point belt (Vehicle belt) even when there is no child in the seat.

!!!!For the protection of your child

- The more snugly the harness fit over your child' s body, the safer your child will be.
- Please do not ever leave your child unattended in the child safety seat in the vehicle.
- Use on the rear seat:

Move the front seat forward far enough that you child's feet cannot hit the backrest of the front seat (to prevent risk of injury).

· The child safety seat can get hot in direct sunshine.

CAUTION! Children' s skin is delicate and could be injured as a result. Protect the child seat against intensive direct sunlight when it is not currently in use.

· Only allow your child to enter and exit the vehicle on the pavement side.

· Make stops during longer journeys to give your child an opportunity to run about and play.

!!!!To protect your vehicle

Some vehicle seat coverings made of more delicate materials (e.g. velour, leather, etc.) may develop wear marks when child seats are used. For optimum protection of your seat covers, we recommend using the our Car Seat Protector, which is available from our range of accessories.

4. Use in the vehicle

Please observe the instructions on the use of child restraint systems described in your vehicle owner' s manual.

The seat may be used in vehicles equipped with 3-point belt. Please consult your vehicle owner' s manual for information about the instruction with 3-point belt. Also check your vehicle owner' s manual for seats which are approved for child safety seats in weight classes 0-13 kg, 9-18 kg, 15-36 kg.



DO NOT use this child seat rear facing on a vehicle passenger seat fitted with an active airbag. Death or serious injury can occur.

You can use your child car seat follows:

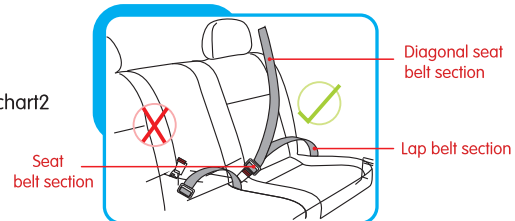
In the direction of travel, see chart 1	Yes
Against the direction of travel, see chart 1	No
With 2-point belt featuring (Vehicle belt), see chart 2	No

chart1



✓ correct ✗ incorrect

chart2



Diagonal seat belt section

Lap belt section

Please observe the applicable regulations in your country

- 1) The seat must not be positioned anywhere where it is in range of an airbag which is being deployed
- 2) If there is a front airbag: Slide the passenger seat a long way back and refer to any instructions in vehicle owner's manual.

5. Approval

Child safety car seat

Tested and certified according to ECE R 44/04

Group Body weight 0~36KG

906

1. 0kg to 13 kg
2. 9kg to 18 kg
3. 15kg to 36 kg

The child safety seat has been designed, tested and certified according to the requirements of the European Standard for Child Safety Equipment (ECE R 44/04). The test mark E (in a circle) and the certification number are located on

the orange certification sticker (sticker on the child safety seat).

- This certification will be invalidated if you make any modifications to the child safety seat.
- The 906 child safety seat must only be used to secure your child in the vehicle. It must never be used as a seat or toy in the home.

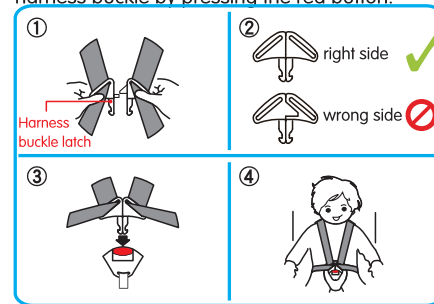
Risk of injury due to unauthorized modifications!

Group	Installation	Child installation
0+ (0-13kg)	installed in the rearward facing position with 3-point vehicle belt	with 5-point harness
1 (9-18 kg)	installed in the forward facing position with 3-point vehicle belt	with 5-point harness
2, 3 (15-36 kg)	installed in the forward facing position with 3-point vehicle belt	Vehicle belt

6. Care and Maintenance

6.1 How to use the harness buckle

- 6.1.1 Guide the two buckle latches together
- 6.1.2 Make sure right side up
- 6.1.3 Engage them before putting them into the harness buckle, this should make a **CLICK** noise.
- 6.1.4 Pull shoulder belts to remove all slack from the lap section ensuring the harness lies flat and harness buckle locked. Open the harness buckle by pressing the red button.



6.2 Care for the harness buckle

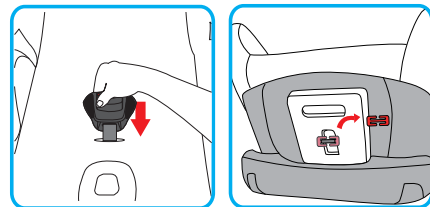
It is vital for the safety of your child that the harness buckle works correctly. Malfunctions of the harness buckle are usually caused by accumulations of dirt or foreign bodies.

Malfunctions are as follows:

- The buckle latches are ejected only slowly when the red release button is pressed.
- The buckle latches will no longer lock home (i.e. they are ejected again if you try to push them in).
- The buckle latches engage without an audible **CLICK**.
- The buckle latches are difficult to insert (you feel resistance).
- The buckle only opens if extreme force is applied.

6.3 Remedy

Wash out the harness buckle so that it functions properly once again.



button).

6.4.2 Grasp the metal plate from underneath and turn it into a vertical position

6.4.3 Slide the metal plate through the slot

6.4.4 Remove the harness buckle

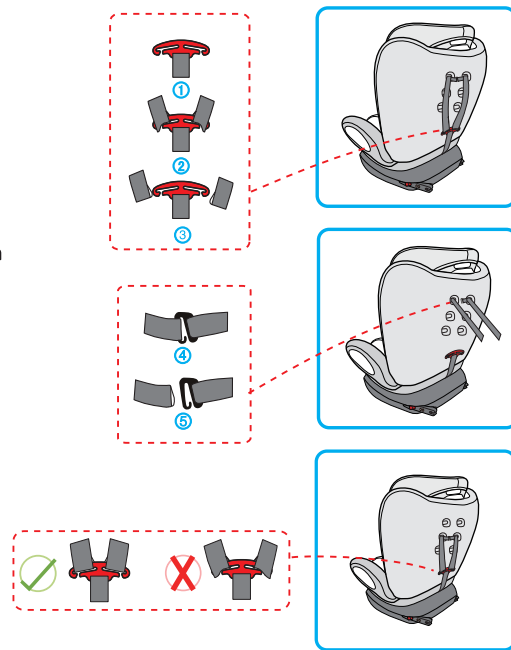
6.4.5 Soak the harness buckle in warm water with washing-up liquid for at least an hour. Then rinse and dry it thoroughly.

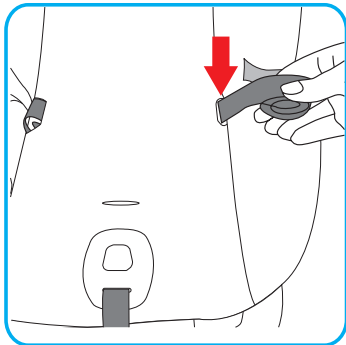
6.5 Removing 5-point harness

6.5.1 Loosen the 5-point harness of the child seat as much as possible by press the button of the crotch belt.

6.5.2 Turn the baby safety car seat to back, unzip the seat cover.

6.5.3 Loosening the shoulder belt in order to access the metal link and connector at the back of the child seat, remove the belt from connector, then remove the shoulder belt from metal link. follow step ①②③④⑤





6.5.4 Then from the front of the child seat, pull out shoulder belt through the slots.

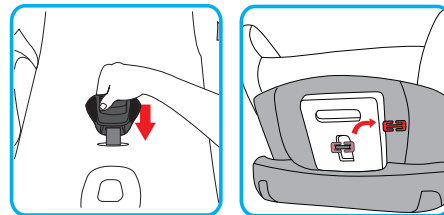
6.5.5 Pull below both, the shoulder pads and the belts to the front through the slots. (front side of the child seat).

6.5.6 Remove the shoulder pads from the shoulder belts and put them in the storage bag.

6.5.7 Roll the shoulder belts separately on both side and place them into the fabric cover from the slot of fabric.

6.5.8 Grasp the metal plate from underneath and turn it into a vertical position. Push upwards and slide the metal plate through the slot.

6.5.9 Remove the harness buckle with the crotch pad and store it in the storage bag.



6.6 Removing the fabric cover

6.6.1 Removing the cover of the headrest

A) Removing the 5–point harness
Take off the cover from backrest and base.

B) Headrest

1. Move the headrest of the child seat to the upper position.

2. Take off the cover from belt holder of headrest first, then remove the cover of the headrest.

6.6.2 Re–fitting the Cover

Simply follow the steps in the opposite way.

CAUTION! Never use the child seat in installation without a correct installed buckle.

Make sure that the metal plate is correctly attached.

CAUTION! Check that the harness straps are not twisted and that they have been correctly inserted in the belt slots on the cover.

6.7 Adjust the angle of child safety car seat

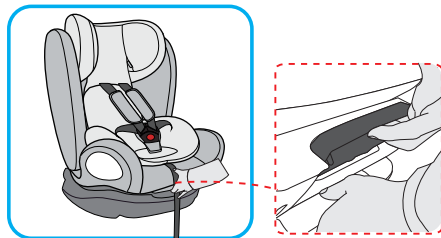
There has 4-level adjustment in the child safety car seat.

Before fixing a child in the child restraint system, the seat must be set on the recline position for rear-facing use, see picture ④ or in the sitting position for forward-facing use, see picture ①②③

To achieve that, use the recline handle located in front of the child restraint system between the sitting part and the base to adjust the desired position.

Total has four level positions:

- ① first level
- ② second level
- ③ third level
- ④ the fourth level



Only forward



Only forward facing



Only forward



Only rear facing

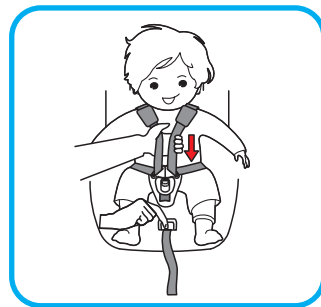
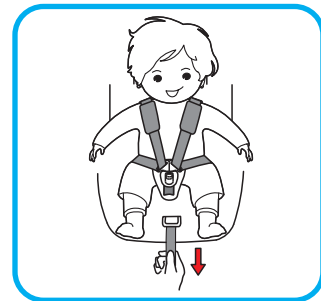
6.8 Adjust the length of harness

In order to protect your child much better, after fix him/her in the child restraint system and lock the buckle, you should tighten the harness so they are snug and flat against the child's body, they should never be twisted or loose.

6.8.1 To tighten the harness, pull the shoulder belt upwards to remove the slack from the lap sections of the harness, at the same time to pull the adjuster crutch belt coming from the lock by your another hand.

6.8.2 To lengthen the harness, press the button on lock between the child's two leg, then pull the two shoulder belt simultaneously in your direction, please note while you are doing this hold the harness, not the harness cover.

CAUTION! Check that the harness straps are not twisted and that they have been correctly inserted in the belt slots on the cover.



6.9 Adjust the height of harness

A correctly adjusted harness ensures that the diagonal seat belt section is optimally positioned, and gives your child the optimal protection.

The harness must be adjusted to that there is a space two fingers wide between the harness and your child's body.

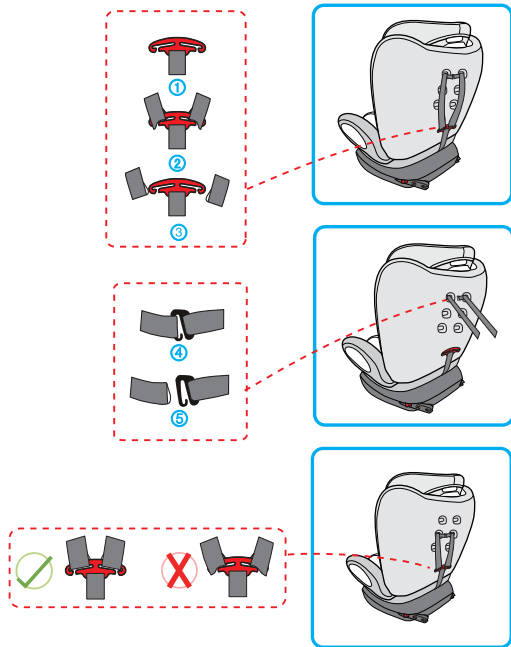
To adjust the height of the harness to fit your child:

6.9.1 Loosening the shoulder belt in order to access the metal link and connector at the back of the child seat.

6.9.2 Remove the belt from connector, then remove the shoulder belt from the metal link, follow step ①②③ ④⑤.

6.9.3 From the front of the child seat, re-thread shoulder belt through the desired slots. Make sure both of the belts go through the slots at the same height.

6.9.4 Connector both shoulder belt to the connector and metal link again, follow step ⑤④③②①.



6.10 Adjusting the headrest in 5-point harness installation

A correctly adjusted headrest ensures optimal protection for your child in the safety seat. The headrest must be adjusted so that the shoulder belts are at the same level as your child's shoulders.

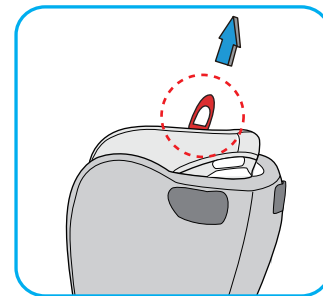


CAUTION! The shoulder belts must not run behind the back of the child or at ear height or above the ears.

The shoulder belts are adjusted as follows:

6.10.1 Loosen the shoulder belt of the child seat as much as possible see 6.8.2

6.10.2 Pull the headrest height adjuster and headrest at same time, select the correct height of the shoulder belts and engage it in the position that fits for your child by releasing the adjuster.



6.11 Adjusting the headrest in Vehicle belt installation

A correctly adjusted headrest ensures that the diagonal seat belt section is optimally positioned, and gives your child the optimal protection. The headrest must be adjusted so that there is a space two fingers wide between the headrest and your child's shoulders.

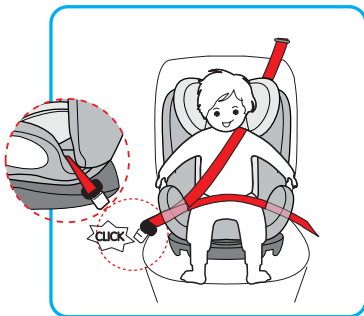
To adjust the height of the headrest to fit your child:

6.11.1 Pull the headrest height adjuster and headrest at same time. This unlocks the headrest.

6.11.2 You can now move the unlocked headrest to the desired height. As soon as you release the adjustment, the headrest will lock into place.

6.11.3 Place the child seat on the vehicle seat.

6.11.4 Have your child sit down in the child seat and check the height. Repeat this process until the headrest is at the optimal height. If in the lowest position the headrest is still too high, additional adjustment can be made through the shoulder belt height adjuster, as explained in section 6.9



7. Instruction

7.1 Group 0 +(0–13kg) installed in the rearward facing position with vehicle belt+5 point harness

7.1.1 Pull the vehicle seat belt and pass the lap belt section through the red belt guidance and under the sleeping cushion.

7.1.2 Pass the diagonal seat belt section through the blue guidance on the back of the child seat.

7.1.3 Fasten the seat belt and pull it tight, ensure that the seat belt is not twisted.

7.1.4 Engage the locking clip on the top part of the belt (shoulder belt) only (please follow the diagram on the right)

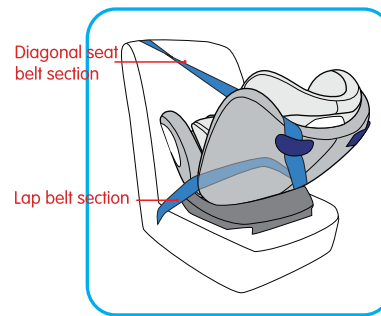
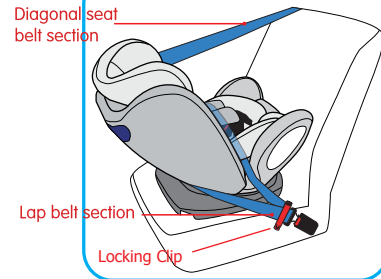
Note:

1. The child seat must only be installed in the rearward facing position and angle of maximum inclination (Fourth lever). For be sure the car seat has been installed in the right place, please shake it before use.

2. Don not twist the belt!

3. Ensure the buckle tongues engage in the vehicle seat buckle, you will hear an audible **CLICK!**

Follow the steps in section securing your child with 5-point harness.



SECURING YOUR CHILD WITH 5-POINT HARNESS

The more snugly the harness fits over your child's body, the better your child will be protected.

Therefore avoid putting thick clothes on your child under the belt.

1. Open the harness buckle (press red button)
2. Have your child sit down in the child seat
3. Make sure that your child's back lies flat against the backrest of the child seat.
4. Guide the two buckle latches together and engage them before putting them into the harness buckle this should make a **CLICK** noise.
5. Pull shoulder belt to remove all slack from the lap section ensuring the harness lies flat.
6. Pull on the shoulder belt until the harness lies flat and is close against your child's body.
7. Pull down on the shoulder pads to ensure they are correctly positioned.

7.2 Group 1(9–18kg) installed in the forward facing position with vehicle belt+5 point harness

To secure the child seat using the 3-point belt of your vehicle proceed as follows:

- 7.2.1 Place the child seat forward facing on the vehicle seat (in the direction of travel).
- 7.2.2 Place the diagonal seat belt section through between headrest and backrest.

CAUTION! Do not twist the belt.

- 7.2.3 Place the lap belt section in the light red belt guides.

CAUTION! Do not twist the belt.

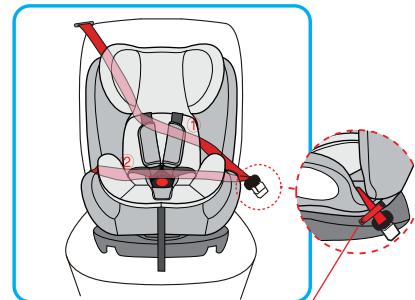
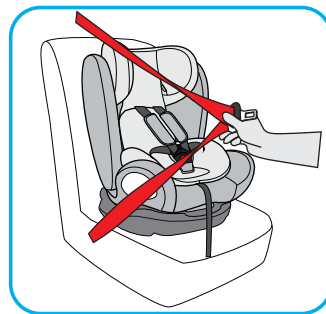
- 7.2.4 Bring together about 80cm of the diagonal seat belt section and lap belt section
- 7.2.5 Ensure the buckle tongues engage in the vehicle seat buckle, you will hear an audible

CLICK!

- 7.2.6 Using your knee to press the child seat, tighten the vehicle seat belt as follows:

First pull on the lower part of the diagonal seat belt section near the vehicle seat buckle

- 7.2.7 Engage the locking clip on the top part of the belt (shoulder belt) only (please follow the diagram on the right)



Locking Clip



0–36kg



7.3 Group 2, 3(15–36kg)installed in the forward facing position with vehicle belt

Note: Must remove the 5–point safety seat belt and sleeping pad before use this group seat.

7.3.1 Guide the diagonal seat belt section into the light red belt guidance of the headrest until it lies completely in the belt guidance and is not twisted.

Note: Make sure that the diagonal seat belt section runs over your child's shoulder bone, and not in front of his or her neck

7.3.2 Place the diagonal seat belt section and lap belt section on the side of the vehicle seat belt buckle through the belt guide of the child safety car seat with a **CLICK** noise.

CAUTION! The diagonal seat belt section must run diagonally backward. You can adjust the course of the belt with your vehicle's adjustable belt deflector on both side.

7.3.3 Shack the child safety car seat to make sure it is safety attached.

7.3.4 Engage the buckle tongue in the vehicle seat buckle **CLICK!**

7.3.5 Place the lap belt section on the other side of

the child seat in the light red belt guide.

CAUTION! The lap belt section must lie as low as possible over your child's hips on both sides.

7.3.6 Guide the diagonal seat belt section into the red belt holder of the headrest until it lies completely in the belt holder and is not twisted.



Tip! If the backrest conceals the belt holder, You can adjust the headrest upwards. The diagonal seat belt section can now be easily inserted. Now return the headrest to the proper height.

7.3.7 Make sure that the diagonal seat belt section runs over your child's shoulder bone, and not in front of his or her neck.

Tip! You can still adjust the height of the headrest again here in the vehicle.

CAUTION! The diagonal seat belt section must run diagonally backward. You can adjust the course of the belt with your vehicle's adjustable belt deflector.

CAUTION! The diagonal seat belt section must never lead forward to the vehicle's belt deflector.

In this case, only use the child seat on the rear seat **For the safety of your child, before every journey in the car check that.**

- The child safety seat is securely fastened;
- The lap belt section runs through the light red belt guides on both sides of the seat cushion;
- The diagonal seat belt section on the side of the vehicle seat belt buckle also runs through the red

guide of the seat cushion;

- The diagonal seat belt section runs through the red belt holder of the headrest;
- The diagonal seat belt section runs diagonally backward;
- The harness are tight and not twisted;

CAUTION! If your child attempts to open the safety buttons or the harness buckle, make sure to stop at the earliest opportunity. Check that the child safety seat is correctly attached and make sure that your child is properly secured. Teach your child about the dangers involved.

8 . Removal of the child seat

CAUTION! Remove the child seat from the vehicle. The child seat must never be transported in the car if it is not properly secured.

8.1Release vehicle seat buckle if securing the child seat.

8.2Remove the child seat from the vehicle.

9. Daily care and instructions

9.1 Daily Care

To ensure the full protective effect of the child safety seat:

- In the event of an accident with an impact speed above 10 km/h it is possible that the child safety seat may have been damaged, but that the damage may not be immediately obvious. In this case the child safety seat must be replaced.

Please dispose of it properly.

- Regularly check all important parts for damage.

Make sure that the mechanical components in particular are all in perfect working order.

- To prevent damage, ensure that the child safety seat does not become jammed between hard objects (car door, seat runners etc.).

- Always have the child safety seat checked if it has been damaged (e.g. if it is dropped).

- Never lubricate or oil parts of the child seat.

- In order to properly protect your baby, it is imperative that you install and use the 906 exactly as described in this manual.

Disposal of packaging	Container for cardboard
Cover	Residual waste, thermal utilisation
Plastic parts	In accordance with the labelling in the designated container
Metal parts	Container for metals
Harness	Container for polyester
Buckle & latch	Residual waste

9.2 Cleaning

CAUTION! Please be sure to use only genuine 906 replacement seat covers, as the seat cover is an integral part of the child safety seat which plays an important role in ensuring that the system works properly. Replacement seat covers are available from your retailer.

CAUTION! The child seat must not be used without its cover. · The cover can be removed and washed with a mild detergent using the washing machine's cycle for delicate items (30 ° C).

- The plastic parts can be cleaned using soapy water. Do not use harsh cleaning agents (such as solvents).

- The harnesses can be washed in lukewarm soapy water.

CAUTION! Never remove the buckle latches from the harness buckle

- The shoulder pads can be washed in lukewarm soapy water.

Do not use harsh cleaning agents (such as solvents)



hand wash



do not bleach



dry clean



do not tumble



do not

For Warranty Registration

Scan QR code for
Online Warranty Registration



Log into

www.koopers.co/warranty-registration/