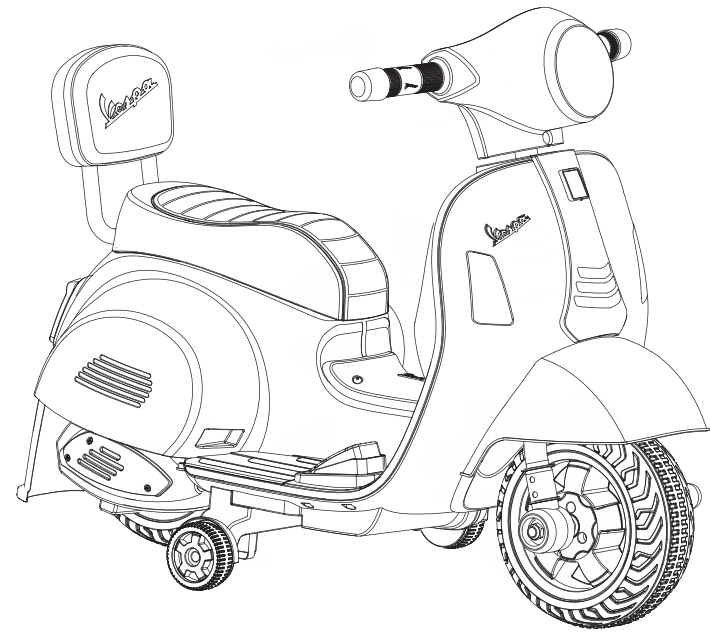




Item No:H1-K Mini Vespa Electric Ride-On Inspired by Vespa GTS

Installation & operation Manual



CAUTION:
•This package contains small parts
•Adult assembly required
•Remove all plastic bags and tires prior to giving to children
•Protective equipment recommended
•Not to be used in traffic
•Keep this instructions for future reference

WARNING
ADULT ASSEMBLY
REQUEST.

Vespa® is a registered trademark owned by Piaggio & C.S.p.A. And used under license by Ningbo Prince Toys Co.,Ltd.

I . SPECIFICATIONS.

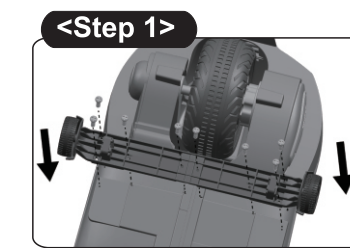
Suitable Ages	18-36 months
Product Dimensions	66.5X38X52cm
Maximum Weight	25 kgs
Speed	2.5 km/h
Motor	30W
Charger	Input: AC 220V/110V Output:DC6V/500mA
Battery	6V4A/6V4.5A
Operating Ambient Temperature	0 - 40 °C

II . Components List

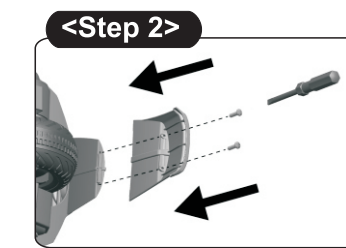
1.Body 1pc 	2.Handle bar 1pc 	3.Front wheel 1pc 	4.Side wheel 1pc
5.Front fender 1pc 	6.Rear fender 1pc 	7.M4X12 Screw 15pcs (1 replacement piece) 	8.Charger 1pc
9.M4X20 screw 5pcs (1 replacement piece) 	10.Backrest 		

2

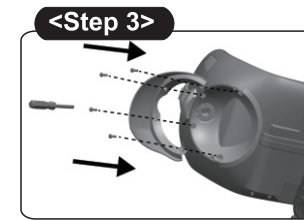
III . Assembly Instructions



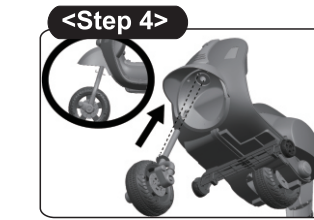
1.Place the side wheel over the location in the bottom of body,tighten by eight screws with a screwdriver (not included).



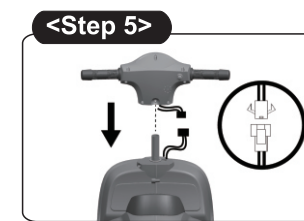
2.Place the rear fender over the location in the rear body, tighten by two screws with a screwdriver(not included).



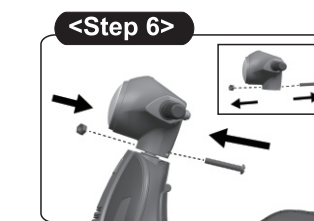
3.Place the front fender over the location in the front body, tighten by four screws with a screwdriver(not included).



4.Insert the front wheel stick into the hole of the body, make sure the right position.

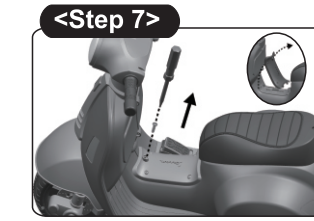


5.Connect the wire plug of the handle bar into the wire plug of the body,then insert the whole plug into the hole.

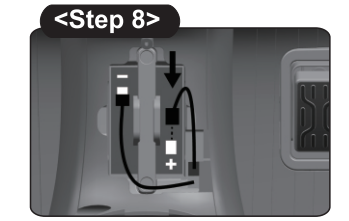


6.Loosen the bolt and nut by a screwdriver (not included) first.Then place the handle bar over the front wheel stick,insert the bolt into the hole and tighten by the nut.

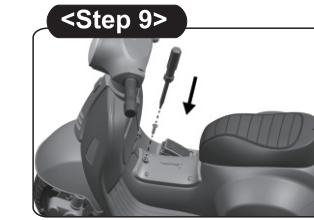
3



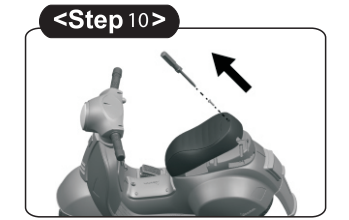
7.Loosen the screw in the battery cover with a screwdriver(not included), then open the battery cover.



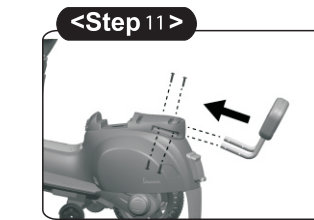
8.When the battery is installed, insert the red cable terminal into the battery positive pole.



9.Close the battery cover and tighten by one screw with a screwdriver(not included).



10.Loosen the screw in the seat with a screwdriver(not included), then open the seat.



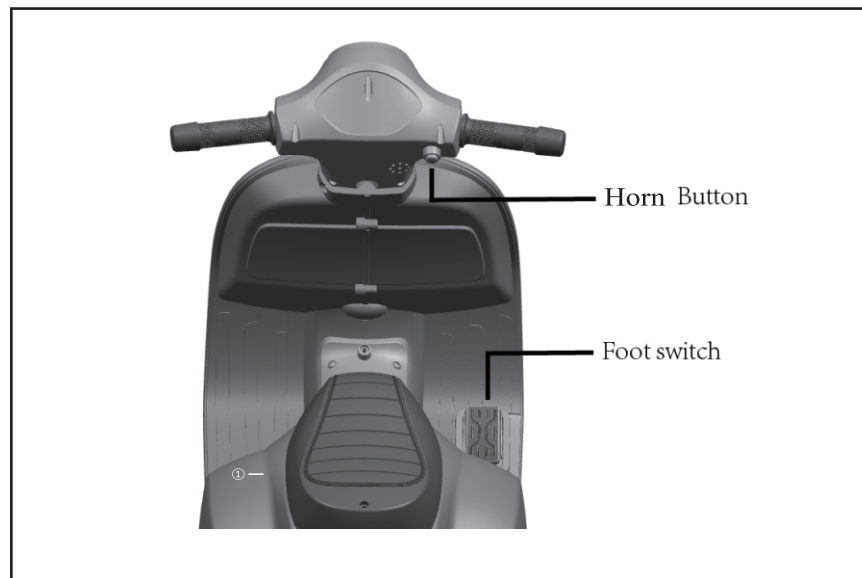
11.Place the backrest according the picture show,and tightened by four M4X20 screws with a screwdriver(not included).



12.Close the seat and tighten by one screw with a screwdriver(not included).

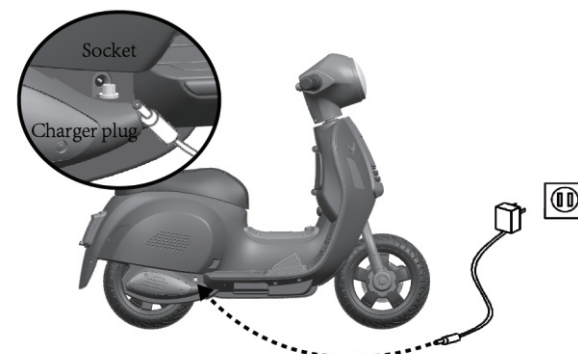
4

IV . Function and Operation



V . Battery and Charger Operating Guide

- The charging socket is located at the right side of the motorcycle.
- The battery and charger which are provided or recommended can be used only.
- Please do not play with the charger and battery because they are not toys.
- The battery charging operation is carried out only by adults but not children.
- The battery shall be fully charged before first use; the battery charging time shall be 9-10 hours and can not exceed 15 hours.
- The lukewarm phenomenon of the charger and battery will occur during charging.



5

VI . WARNING

1. Battery warning:

- When storing the car for long period of time, charge the battery until full then turn off the power switch. The battery should be recharged once every other month, or may otherwise have a shorter life span and risk deteriorating.
- When installing the battery, it is important that the positive and negative poles are correctly connected. Short circuiting of positive and negative poles may result in damaging the toy.

2. Product warning:

- There may be potential sharp edges, sharp points or small parts before the assembly of this product, and therefore this product shall be assembled by the adult.
- To avoid suffocation, keep the plastic bag away from children. Dispose of all bags immediately.
- The children shall correctly use the car under the adult guidance and supervision,otherwise they may make themselves or the others injured.
- The car is suitable for being driven on the flat ground and strictly prohibited to be driven in dangerous places such as public roads,slope and near swimming pool to prevent traffic and drowning accidents
- Please put on shoes and protection equipment before use,putting on the helmet, safety gloves, knee pads, etc. helmet, gloves, knee pads, etc.
Regularly check whether the battery, charger, wire, plug, casing and other parts are damaged; if the damage occurs, please cease to use this product until it has been repaired. This product is only allowed to be used by a child; the maximum load is 25kg, and therefore the overload is not allowed.
Keep away from fire.
The product instructions shall be kept as they contain important information.

6

3. WARNING:



Adult supervision required to reduce the risk of injury;
Strictly forbidden to use on roadways, near motor vehicles, slopes or swimming pools and areas where there is water;
Please wear shoes when operating vehicle;
Can only be used by one person at a time;
Keep away from children before assembled as there may be sharp edges points or small parts.
Adult assembly required.



Do not mix alkaline battery, standard (carbon-zinc) battery or rechargeable (nickel-cadmium) battery.



Protective equipment should be worn.Not to be used in traffic.

VII . Care and Maintenance

- Regularly wipe and clean it with a piece of cloth.
- The rotating parts of the car should be checked regularly to determine whether any foreign matter obstructs the rotation and to keep lubricating state of normal operation.

WARRANTY REGISTRATION



6 months
warranty

7



Koopers Distribution Sdn Bhd

☎ 03-78324338

🌐 www.koopers.co

📘 www.facebook.com/koopersmalaysia

✉ sales@koopers.co

📍 18-1, Jalan Bulan U5/BM, Section U5, Bandar Pinggiran Subang 40150 Shah Alam, Selangor Malaysia