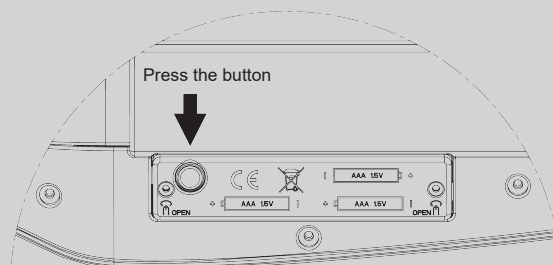
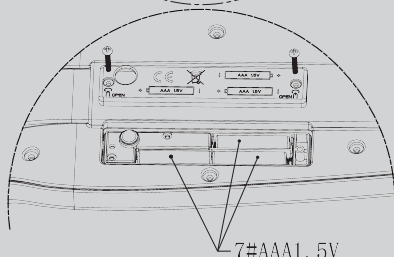
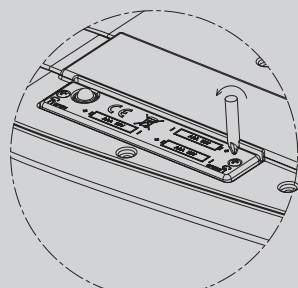
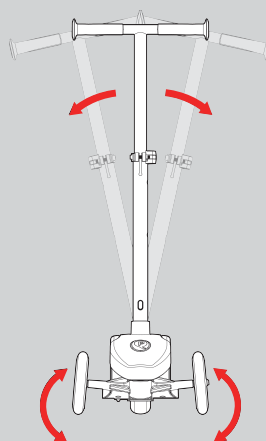
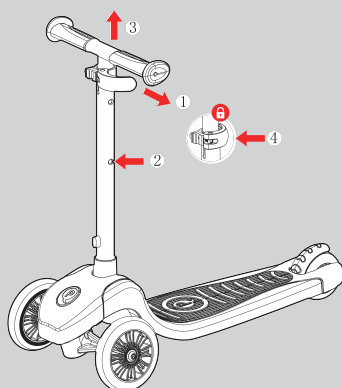
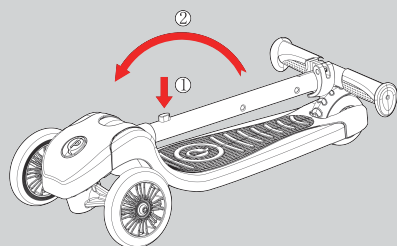


## Product Specifications

Category	Content	Category	Content
Recommended Age	3-8years	Product Weight	3.2kg
Maximum Load	50kg	Product Size	570x250x810mm
Product Materials	Steel,PP,TPE		

Company name: QPLAY SOUTH EUROPE .S.L.  
Address: PONENT 4 03430 ONIL (ALICANTE) SPAIN  
Tel: +34 620 286 145  
Fax: +34 966 561 006  
Email: cgisberfi@qplaykids.com

Website: www.qplaykids.com



Press button the first time: The light stay on

Press button the second time: The light go on and off in slow frequency

Press button the third time : The light go on and off in fast frequency

Press button the fourth time : The light go off

## WARNING!

- Read the information supplied by the manufacturer.
- Age of user: 3-8 years
- Protective equipment should be worn. Not to be used in traffic. 50kg max.
- Always wear safety equipment such as helmet knee pads and elbow pads. Always wear a helmet when riding your scooter and keep the chinstrap securely buckled. Always wear shoes.
- Place one foot on the baseboard, push forward with the other foot.
- Ride on smooth, paved surfaces away from motor vehicles.
- Recommends that you practice applying the brake at various speeds and in an open area free from obstructions before riding.
- Avoid sharp bumps, drainage grates, and sudden surface changes. Scooter may suddenly stop.
- Avoid streets and surfaces with water, sand, gravel, dirt, leaves, and other debris. Wet weather impairs traction, braking, and visibility.
- Do not ride at night.
- Brake will get hot from continuous use. Do not touch after braking.
- Avoid excessive speed associated with downhill rides.
- Adults must assist children in the initial adjustment procedures to unfold scooter, adjust handlebar and steering to height, and finally to fold scooter.
- Keep your fingers clear of the pivoting mechanism when folding or unfolding the scooter.
- Obey all local traffic and scooter riding laws and regulations.
- Watch out for pedestrians.
- Check and secure all fasteners before every ride.
- This product is for private, residential use only. (no commercial or public use)
- Damaged components may endanger the safety of your child or shorten the lifespan of the product. Incorrect repairs or removal of other parts may be a source of danger to the user.
- Replace worn or broken parts immediately.
- Adult supervision and adult assembly required.
- Shall be used with caution, since skill is required to avoid falls or collisions causing injury to the user or third parties.
- Ensure that all locking devices are engaged before using.
- Regular safety checks should be carried out on the product to ensure integrity of assembly especially loose or dislocated components. Inspecting the product at a regular time intervals can prevent accidents.
- Hazards such as manholes, tracks and drains - the scooter wheels could get stuck and cause injury to your child when using this product on public highways.
- Not to be used for children under 36 months, small part, choking hazard.
- Wipe with a damp cloth to remove dirt and dust.
- Never use corrosive or abrasive substances to clean the product. Never use substances which may cause pollution of the environment.
- Please retain the original packaging for future reference.
- Non-rechargeable batteries are not to be recharged.
- Rechargeable batteries are only to be charged under adult supervision.
- Rechargeable batteries are to be removed from the toy before being charged.
- Different types of batteries or new and used batteries are not to be mixed.
- Batteries are to be inserted with the correct polarity.
- Exhausted batteries are to be removed from the toy.
- The supply terminal are not to be short-circuited.



This symbol on the product and / or accompanying documents means that used electrical and electronic equipment (WEEE) should not be mixed with general household waste. For proper treatment, recovery and recycling, please take this product to designated collection points where it will be accepted free of charge. Alternatively, in some countries, you may be able to return your products to your local retailer upon purchase of an equivalent new product. Disposing of this product correctly will help save valuable resources and prevent any potential negative effects on human health and the environment, which could otherwise arise from inappropriate waste handling. Please contact your local authority for further details of your nearest designated collection point. Penalties may be applicable for incorrect disposal of this waste, in accordance with your national legislation. For professional users in the European Union If you wish to discard electrical and electronic equipment (EEE), please contact your dealer or supplier for further information. For disposal in countries outside of the European Union This symbol is only valid in the European Union (EU). If you wish to discard this product please contact your local authorities or dealer and ask for the correct method of disposal.