



**TAVO**  
**GENERATION**

Moving  
to **EASY**

# Basic Edge R

## stroller










### Instruction Manual

★ ★ ★ ★ ★  
EN 1888  
Approved  
★ ★ ★ ★ ★  
EN1888-1:2018  
EN1888-2:2018



# **WARNING**

## **IMPORTANT - READ CAREFULLY AND KEEP FOR FUTURE REFERENCE**

-  **WARNING:** Never leave your child unattended.
  -  **WARNING:** Check that the pram body or seat unit or car seat attachment devices are correctly engaged before use.
  -  **WARNING:** Avoid serious injury from falling or sliding out. Always use the crotch strap in combination with the waist belt.
  -  **WARNING:** Use the harness as soon as your child can sit unaided.
  -  **WARNING:** The product is not suitable for running or skating.
  -  **WARNING:** Ensure that all the locking devices are engaged before use.
  -  **WARNING:** To avoid injury ensure that your child is kept away when unfolding and folding this product.
  -  **WARNING:** Do not let your child play with this product.
  -  **WARNING:** Always use the restraint system.
- Before use, please read the manual carefully. Please be familiar with the product operation.
  - Before use, ensure that the product and all its components have no damaged during transportation.
  - Pushchair designed to be used from birth shall recommend the use of the most reclined position for new born babies.
  - An instruction that the parking device shall be engaged when placing and removing the children.
  - For car seats used in conjunction with a chassis, this vehicle does not replace a cot or a bed. Should your child need to sleep, then it should be placed in a suitable pram body, cot or bed.
  - Only replacement parts supplied or recommended by the manufacturer/distributor shall be used.
  - Do not use the product if any part is broken, torn or missing and use only spare parts approved by the manufacturer.
  - Completely remove all plastic bags and packaging materials before using to prevent choking hazard.
  - The stroller is designed for one child only. Do not allow a child to ride or sit on areas of stroller other than the seat.

# WARNING

## IMPORTANT - READ CAREFULLY AND KEEP FOR FUTURE REFERENCE

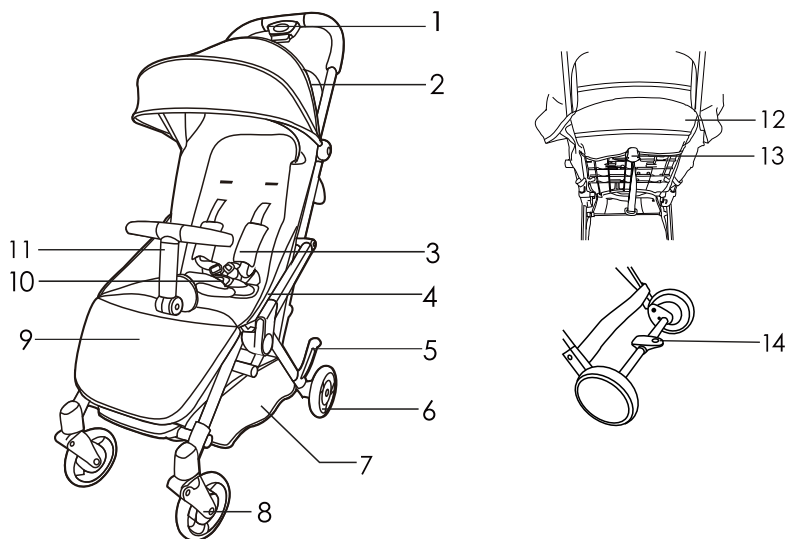
- A statement that any load attached to the handle and/or on the back of the backrest and/or on the sides of the vehicle will affect the stability of the vehicle.
- Do not use the stroller on steep slopes, stairs, escalators, beaches, rough roads, mud, etc.
- Do not lift or carry the stroller while occupied. The stroller may be folded.
- Ensure children are clear of moving parts before making any adjustments.
- To avoid the stroller becomes unstable, do not attach any accessories that are not provided by the manufacturer.
- Before placing the child in the stroller, make sure it is unfolded properly and all the locking settings are engaged.
- The stroller's speed should be no more than guardian's walking speed.
- Never put any toys or other things with ropes around the child in the stroller.
- Please take the child out of the stroller first and then carry the stroller when using on slope, step or escalator.
- Be careful not have the child's finger or toe entrapped when adjusting the backrest, rotating the handle or extending the canopy.
- Take the child out first before adjusting the stroller.
- Never place anything hot or heavy on the stroller.
- Be careful the stroller will be overturn easily when the child's action is too much in the stroller because the gravity center changed. For example, the child moves to right or left, or to front and back.
- Do not allow your child to climb unassisted into, or stand onto the stroller.
- Do not let your child stand or play on the footrest.
- Always use the brake when the stroller is parked.
- The thickness of the extra mattress in the seat can not be more than 25mm.
- Any accessories are not provided by manufacturer cannot be used on this stroller.
- This product is not intended for commercial use.

# **WARNING**

Important - Keep these instructions for future reference

- BASKET MAXIMUM LOADING CAPACITY = 5kgs. Overloading could damage this vehicle or affect its stability.
- This vehicle is intend for children from newborn and up to 22 kg. Overloading may damage or break this vehicle.
- This product must only be pushed by an adult.

## NAME OF PART



- 1.Folding Button
- 2.Canopy
- 3.Shoulder Protector
- 4.Armrest
- 5.Folding Latch
- 6.Rear Wheel
- 7.Basket

- 8.Front Wheel
- 9.Footrest
- 10.Harness Buckle
- 11.Front Bumper
- 12.Backrest
- 13.Backrest Adjustable Button
- 14.Brake Lever

# USING THE STROLLER

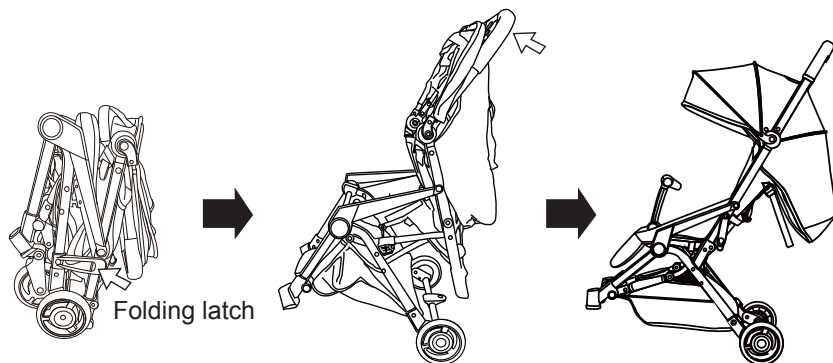
## **⚠ WARNING**

Before each usage, always check the product for damaged hardware, loose joints and sharp edges. Ensure the stroller is fully erected before placing your child inside.

### **1. Unfolding the stroller**

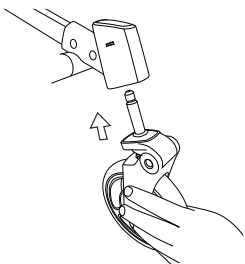
- Release the locked folding latch; Hold the handle grip by one hand and pull up the frame.

Caution: Before using, make sure the stroller is completely opened and lock system is engaged.



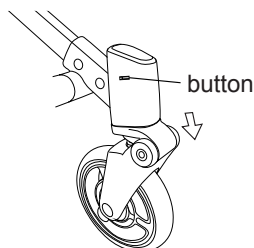
### **2. To assemble the front wheels**

see photo, insert the steel pin of the front wheel into the front leg until the wheel clicks into position.



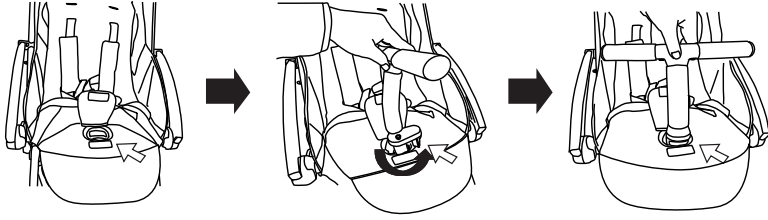
### **3. To detach the front**

see photo, press down the steel button in side and pull out, the front wheel can detach.



#### 4. Fixing the front bumper

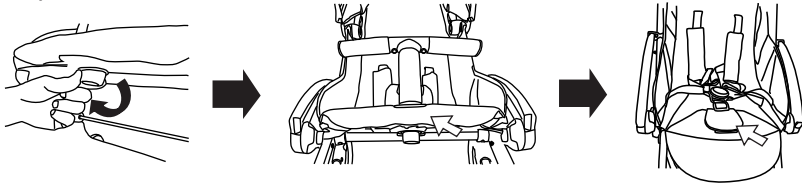
- Open up the seat cover; Slide the front bumper into the adaptor as illustrated until it is fixed.



## USING THE STROLLER

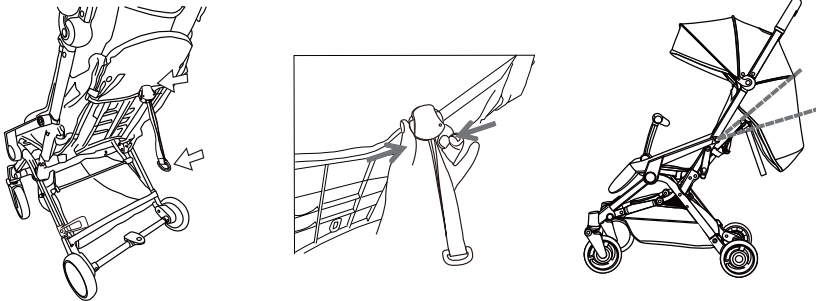
#### 5. Disassemble the front bumper

- Turn the mechanism 90 degrees under the seat, at the same time, lift up the front bumper. Replace with the cover.



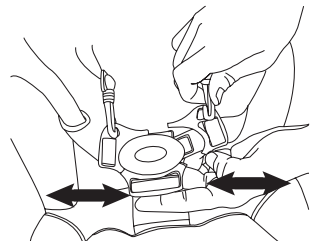
#### 6. Adjusting the backrest

- To recline: Pull down the reclining adjuster to lower down the backrest.
- To raise up: Holding reclining strap with one hand, with other hand sliding the adjuster upward to pull up the backrest.



#### 7. Using the seat belt

- Securing the seat belt: Attach the inserts of the shoulder belt to the buckle until you hear the “click” sound to make sure it is secured.
- Releasing the seat belt: Press down the button on the buckle, using the other hand to pull out both side of the inserts.



# USING THE STROLLER

## 8. Adjustment the seat belt length

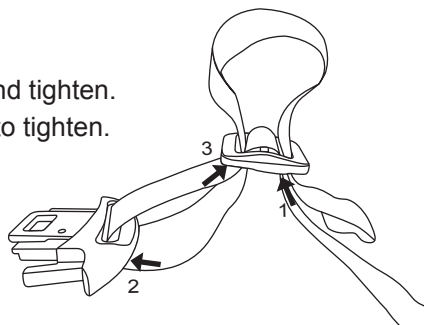
- To shorten: Pull out the strap, draw out the tail belt and tighten.
- To extend: Shorten the strap end and pull backward to tighten.

### ⚠ WARNING

Avoid serious injury from falling or sliding out. Always use seat belt.

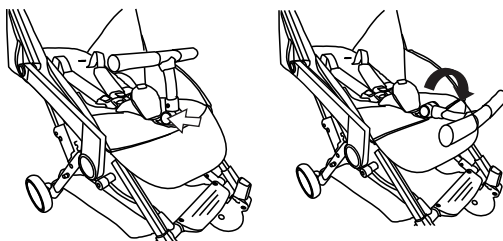
### ⚠ WARNING

Always use the crotch strap in combination with the waist belt.



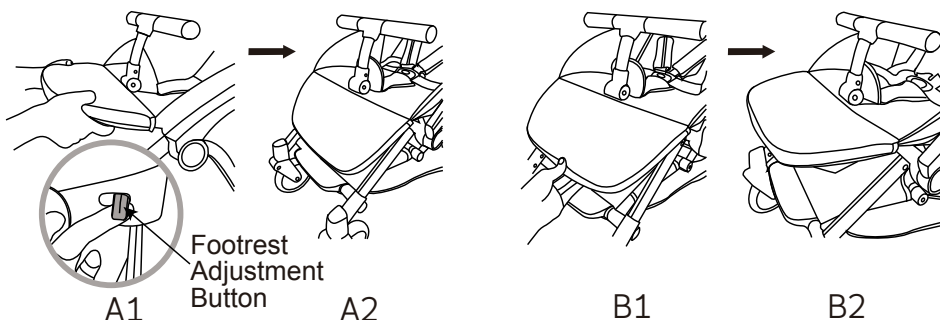
## 9. Using the front bumper

- To fold down: Press the button and fold forward.
- To use: Pull up the bumper until you hear a “click” sound.



## 10. To use footrest adjustment:

pull out the footrest adjust button as A1 to lay down the footrest as A2;  
Pull up the footrest as B1 and B2.

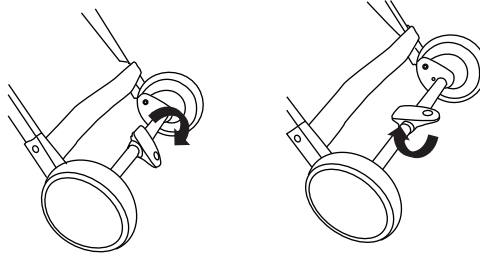


### 11. Using the rear wheels brake

- To brake: Push the rear brake lever down.
- To release: Lift the rear brake lever up.

#### **⚠ WARNING**

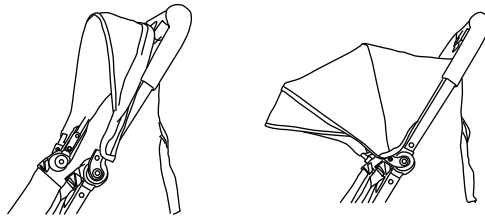
Push the stroller forward to ensure that the brakes are properly engaged.



## USING THE STROLLER

### 12. Using the canopy

- Pull the canopy forward or backward to open up or close the canopy.



## FOLDING THE STROLLER

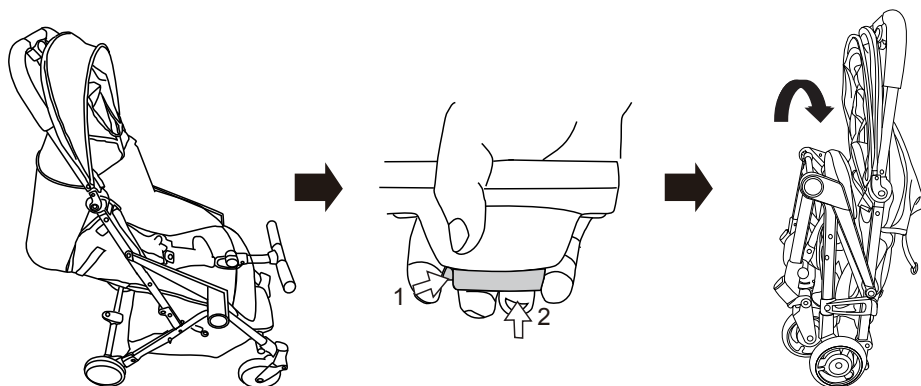
#### **⚠ WARNING**

Before folding, ensure children are clear of moving parts.

NOTE: The front bumper should always be in the folded-down position and the canopy must be folded prior the folding.

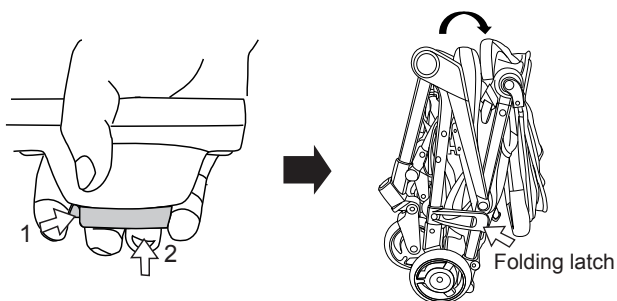


- Fold the canopy.
- Press the bumper button and pull the bumper forward to the folded-down position.
- Press the button 1 first then button 2 to fold the stroller until it can stand by itself.



## FOLDING THE STROLLER

- Press the button 1 first then button 2 to fold down the handle.
- Replace the folding latch to securely lock the stroller.



# CAUTION

- Before each use, please check all the fittings are engaged and working properly.
- Never allow your child to climb out from the front guard and stand onto the seat.
- Never use on the rough surface, near stove and in any area with hazard.
- Keep the product out of direct sunlight and other source of heat to avoid color fading of stroller's plastic parts and fabric.
- When storing, using cautions as extreme changes in temperature or humidity can compromise the stroller making it extremely dangerous to your child.

# MAINTENANCE TIPS

- To avoid injury, periodically carry out maintenance and examine the stroller.
- Regularly check if any bolts, parts or sewing is damaged. If needed, please replace the damaged parts immediately.
- When detaching parts, please read and follow the steps written in the manual to avoid damage the parts.

# WASHING INSTRUCTION

- Hand-wash using cold or warm water (max. 30 C). Do not tumble-dry.
- After washing, lay it flat under the shaded and ventilated area to dry.
- Do not put it into washing machine and drying machine as it may damage the buckles and snaps.
- Do not bleach. Do not iron.
- Harmful chemicals, rain water and detergent type may affect the shape or color. Be careful when washing the product.
- Use damp cloth to clean stroller body and plastic parts, always dry it.
- Detergents with bleach agents can fade or distort the colors.



Moving  
to **EASY**

## Online Warranty Registration

Scan QR code below .



OR

Log into

[www.koopers.co/warranty-registration/](http://www.koopers.co/warranty-registration/)



TAVO GENERATION

Moving  
to **EASY**

Distributed by :

Koopers Distribution Sdn Bhd

📞 03-78324338

🌐 [www.koopers.co](http://www.koopers.co)

📘 [www.facebook.com/tavomalaysia](https://www.facebook.com/tavomalaysia)

✉ [sales@koopers.co](mailto:sales@koopers.co)

📍 18-1, Jalan Bulan U5/BM, Section U5, Bandar Pinggiran Subang,  
40150 Shah Alam, Selangor, Malaysia

SG-A6-SM002 新加坡 A6Q-HEST2 说明书(BKS201912107)要求:

1. 成品尺寸: 14.5\*21cm, 一共12页, 按照顺序依次排列;
2. 印刷颜色: 黑色, 黄色PT 1225C;
3. 材质: 铜版纸;
4. 备注: 更改了页码3、4、5、6、7的内容。