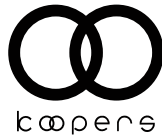
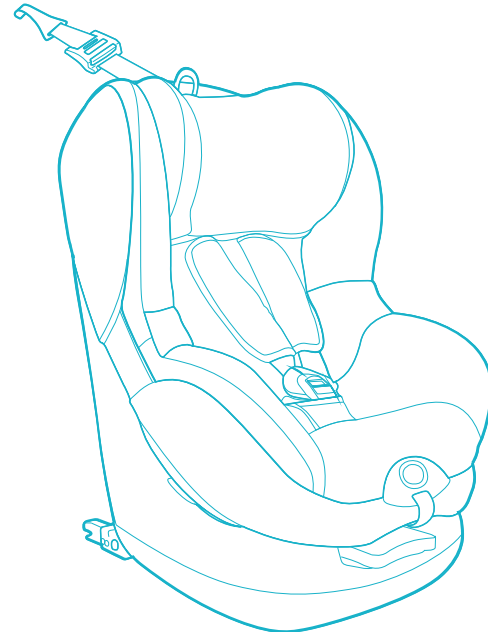


# SALSA

Group : 0+1 (0-18kg)  
birth to 4 years



the journey will never be the same



Koopers Distribution Sdn Bhd

☎ 03-78324338

🌐 [www.koopers.co](http://www.koopers.co)

📘 [www.facebook.com/koopersdistribution](https://www.facebook.com/koopersdistribution)

✉ [sales@koopers.co](mailto:sales@koopers.co)

📍 18-1, Jalan Bulan U5/BM, Section U5, Bandar Pinggiran Subang,  
40150 Shah Alam, Selangor  
Malaysia

Model: ST-1A gr oup 0+1

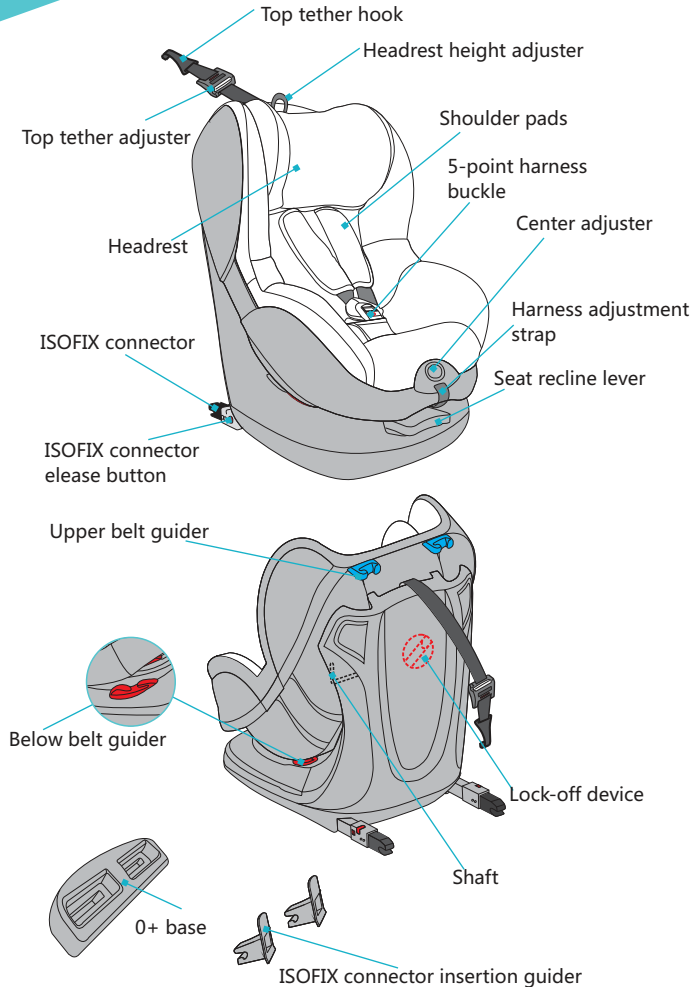
◀ Please read this manual carefully before use. ▶

1.Warning .....	01
2.Product composition.....	02
3.Installation positions within the vehicle ....	03
4.Setup within the vehicle .....	03
5.Installation in the vehicle/ Group 0+ .....	04-07
5.1.Installing the child seat	
5.2.Fastening the child into the seat	
6.Installation in the vehicle/ Group 1.....	08-12
6.1.Installing the child seat with ISOFIX and Top tether	
6.2.Installing the child seat with three point belt	
6.3.Fastening the child into the seat	
7.Adjusting the seat .....	12
8.Child seat care and maintenance .....	13
9.Warranty .....	14

## 1. WARNINGS

- Please read carefully before installing the child seat in the vehicle.
- 1.This child safety seat is suitable for use as group 0+1 from approx.0 to 4 years age/ 0-18kg.
  - 2.Please read this instructions carefully, as incorrect installation could result in serious injury. If any injuries should occur as a result of incorrect installation, the manufacturer will accept no responsibility.
  - 3.This child seat is in accordance with the ECE R44/04 regulations and may be installed in the majority of vehicles equipped with approved points, such as ISOFIX points, in accordance with ECE regulation 16, However, prior to purchase, the child seat should always be tested in your vehicle with the child seated, in order to ensure that the model meets your needs.
  - 4.Never use the child safety seat without its cover.
  - 5.Protect the child safety seat from direct sunlight, as the seat can get very hot and harm the child.
  - 6.Child seats or accessories that are damaged or have been used incorrectly must be replaced.
  - 7.Do not leave heavy objects inside the car, as these may injure the child in the event of an accident.
  - 8.Ensure that no part of the child seat is caught in the door of the vehicle or in a reclining seat. In addition, ensure that the safety seat is correctly installed and secured.
  - 9.Do not disassemble, modify, or add any piece to the child seat or harness, as this would seriously affect its basic functioning and the safety that the child seat provides.
  - 10.The safety seat must remain installed in the vehicle. Even if the child is not seated in the car seat. The child must never be left unattended while seated in the safety seat, not even outside the vehicle.
  - 11.Keep the safety seat away from corrosive products.
  - 12.The manufacturer guarantees the quality of its products, but not the quality of send-hand products or products belonging to other companies.
  - 13.Instruction illustrations are for informational purposes only. The child restraint system may contain small differences compared to the photographs or images in the instruction manual.

## 2. PRODUCT COMPOSITION



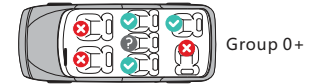
## 3. INSTALLATION POSITIONS WITHIN THE VEHICLE

### 4. SETUP WITHIN THE VEHICLE

Facing the direction of travel (group 1) ✓  
 Facing away from the direction of travel (group 0+) ✓

With the 2-point belt (car seatbelt) ✗  
 With the front airbag ✗

On seats with:  
 Group 1: (1) ISOFIX anchorage points (between the seat and the seat back) and top tether anchorage points (such as on the rear shelf, on the ground or behind the seat)



Group 0+: 3-point seatbelts

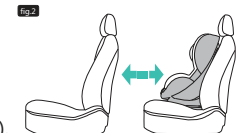
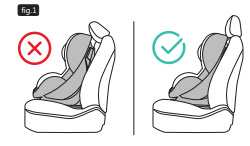
### 4.SETUP WITHIN THE VEHICLE

Place the child seat in the rear of the vehicle, facing away from the direction of travel (group 0) or facing forward (group 1).

The child seat must be as closely attached to the vehicle's seat as possible. For vehicles with adjustable headrests, a better installation can be achieved by adjusting the height or removing the headrest (fig.1) (Group 1).

It is important to replace the headrest in its position when an adult is travelling.

The child seat must not be transported in the vehicle without being buckled in, even when the child is not travelling in the child seat. It is very important to keep this in mind, in order to avoid any damage that the child seat could cause in the event of an accident. The child seat must therefore remain installed at all times while driving.



Ensure that the distance between the child seat, installed in the rear of the vehicle, and the front seat is the maximum possible (fig.2).

### 5.1 INSTALLING THE CHILD SEAT

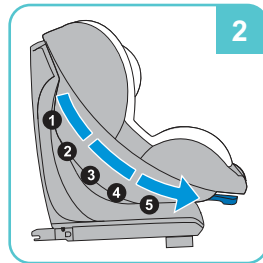
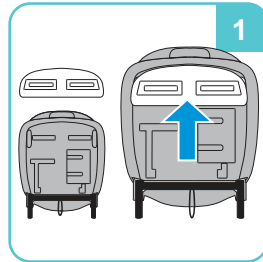
Only group 0+ from approx. 0 to 10 months (0 to 13kg)

1. Connect the seat to the 0+ base by inserting it into the holes on the top of the child seat base. (fig.1)

2. Recline the child seat fully. Pull the seat recline lever upwards. Recline the seat while keeping hold of the lever. Release the lever when the seat is in the most reclined position. (fig.2)

3. Place the child seat in the rear of the vehicle, facing away from the direction of travel. (fig.3)

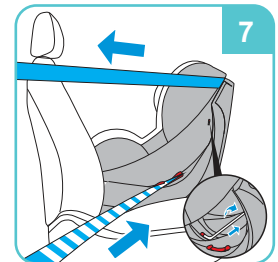
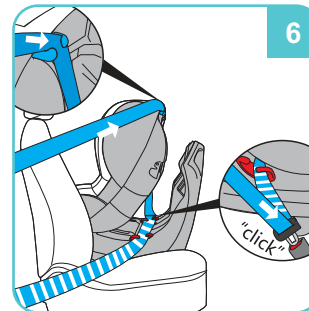
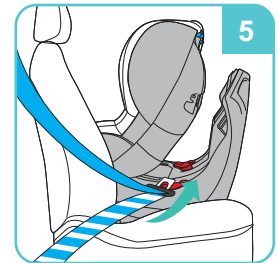
4. Turn unlock the shaft and pull it out. (fig.4)



5. Pull away the seat shell away from the seat base, insert 3-point seatbelt through seat shell and seat base. (fig.5)

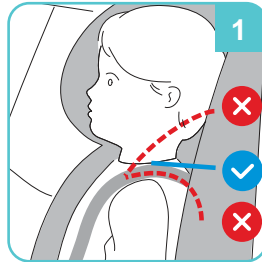
6. Belly part of the 3-point seatbelt go through two below belt guiders, lock 3-point seatbelt until you hear a "click". Then shoulder part of 3-point seatbelt go through one upper belt guider which is close the retractor. (fig.6)

7. Push together the seat shell and seat base, insert back and turn locked the shaft. Pulling the 3-point seatbelt to remove any slack, and make sure there is no twist. (fig.7)

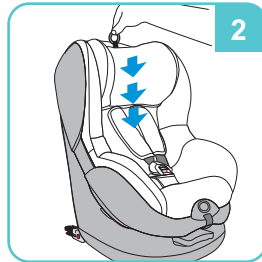


### 5.2 FASTENING THE CHILD INTO THE CHILD SEAT

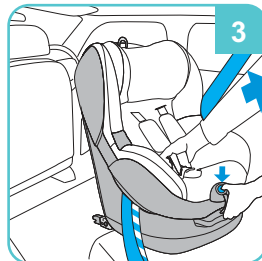
1. The correct adjustment of the headrest ensures that the child is properly fastened into the car seat. The headrest must be adjusted so that the harness (which moves with the headrest) is at shoulder height on the child or slightly above, but never behind the back or at the ear level (fig1)



2. Pull the headrest height adjuster and move headrest to shoulder height in accordance with the size of the child (fig2)

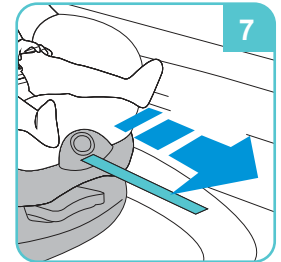
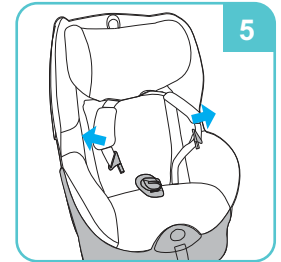
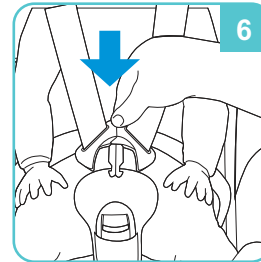
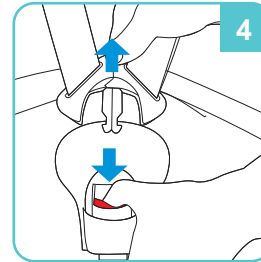


3. Loosen the harness strap by stretching the chest section while holding down the center adjuster (fig3).



5. Place the child into the seat, then fit the safety harness around the child, using the buckle to fasten the two parts together until you hear a "click" (fig5)

6. Stretch the harness adjustment belt in order to give the harness correct amount of tension. (fig 6,7)



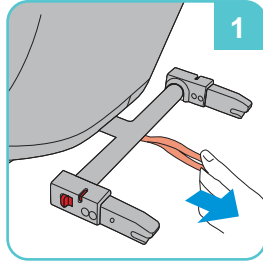
## 6. INSTALLATION IN THE VEHICLE / GROUP 1

### 6.1 ONLY GROUP 1 FROM APPROX

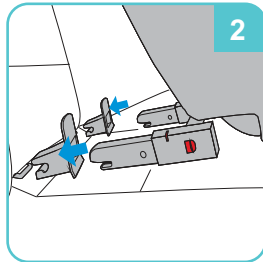
9 months to 4 years of age (9-18kg)

#### 6.1.1 CHILD SEAT INSTALLATION (USE ISOFIX SYSTEM)

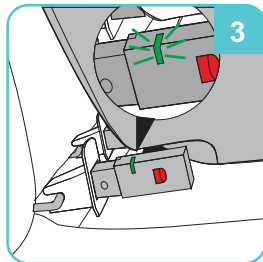
1. Pull out the ISOFIX connectors as far as possible by pulling the strap (fig1.)



2. Clip the insertion guides onto the ISOFIX anchorage points in the vehicle (fig2.)



3. Guide the ISOFIX system connectors on the child seat into the insertion guides until they lock into the ISOFIX anchorage points in the vehicle and there is an audible "click". The ISOFIX system indicator will change from red to green when the child seat is securely locked in place (fig3)



4. Push the child seat against the car seat to check that the ISOFIX system is fully latched, ensuring that the child seat is as close to the car seat as possible (fig4).

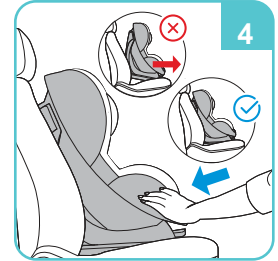
#### 6.1.2 UNINSTALLING THE ISOFIX CONNECTORS

1. Pull the release buttons back to uninstall the ISOFIX system from the child seat (fig5).

## 6. INSTALLATION IN THE VEHICLE / GROUP 1

### 6.1.3 INSTALLING THE TOP TETHER

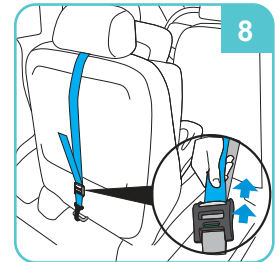
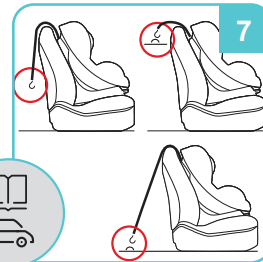
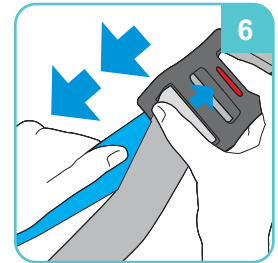
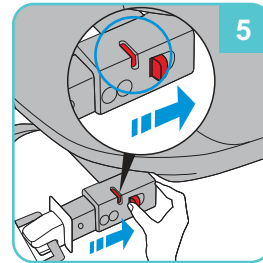
1. Take the top tether and if required, lengthen the belt by pressing the top tether brake button to release the strap, pulling to adjust as necessary (fig6)



2. Attach the top tether hook to the top tether anchorage point which is recommended in the owner's manual for your car (fig7)

Look for this symbol in your vehicle 

3. To tension the top tether, remove any slack by pulling on the free end of strap until it is suitably tightened. The top tether will be properly tightened when the tension indicator turns completely green (fig8).



## 6. INSTALLATION IN THE VEHICLE / GROUP 1

### 6.2 CHILD SEAT INSTALLATION (USE 3-POINT SEATBELT)

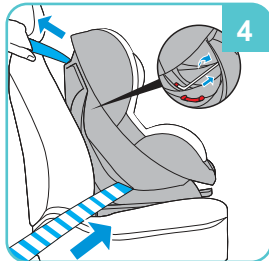
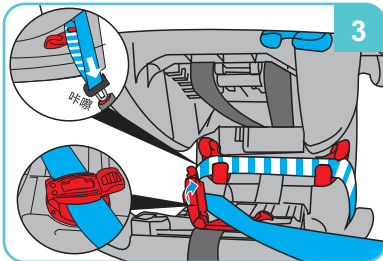
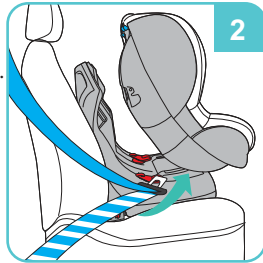
Only group 1 from approx. 9 months to 4 years of age (9-18kg)

1. Place the child seat in the vehicle, facing from the direction of travel. Turn unlock the shaft and pull it out.(fig.1)

2. Pull away the seat shell away from the seat base, insert 3-point seatbelt through seat shell and seat base.(fig.2)

3. Belly part of the 3-point seatbelt go through two below belt guiders, lock 3-point seatbelt until you hear a "click". Then shoulder part of 3-point seatbelt go through the lock-off device. Turn the lock-off device and locked. (fig.3)

4. Pulling the 3-point seatbelt to remove any slack, and make sure there is no twist. Push together the seat shell and seat base, insert back and turn locked the shaft. (fig.4)



## 6. INSTALLATION IN THE VEHICLE / GROUP 1

### 6.3 FASTENING THE CHILD INTO THE CHILD SEAT

1. The correct adjustment of the headrest ensures that the child is properly fastened into the car seat. The headrest must be adjusted so that the harness (which moves with the headrest) is at shoulder height on the child or slightly above, but never behind the back or at the ear level (fig1)

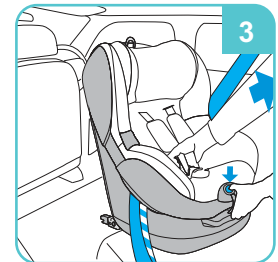
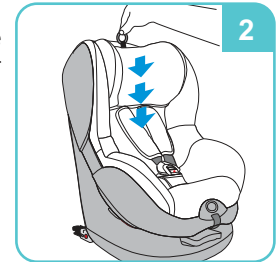
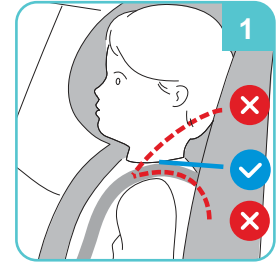
2. Pull the headrest height adjuster and move headrest to shoulder height in accordance with the size of the child (fig2)

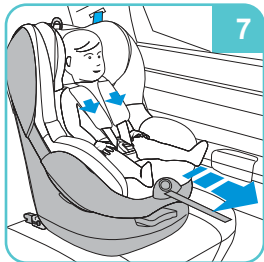
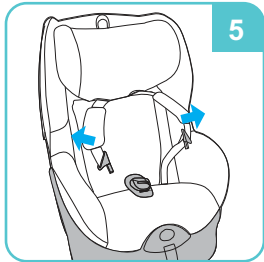
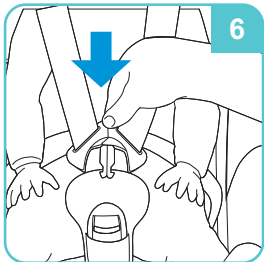
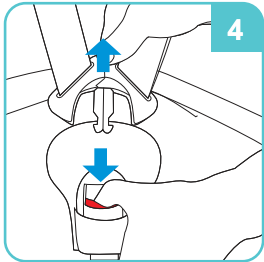
3. Loosen the harness strap by stretching the chest section while holding down the center adjuster (fig3).

4. Open the buckle so that the child can be placed into the seat. The harness straps can be placed on the armrest (fig4).

5. Place the child into the seat, then fit the safety harness around the child, using the buckle to fasten the two parts together until you hear a "click" (fig5)

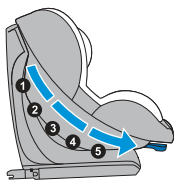
6. Stretch the harness adjustment belt in order to give the harness correct amount of tension. (fig 6,7)





### 7. ADJUSTING THE SEAT

In order to make the child as comfortable as possible, the seat can be reclined by pulling the lever under the front part of the seat. Keep the lever pressed down as you recline the seat, releasing it when the seat is in the desired position.

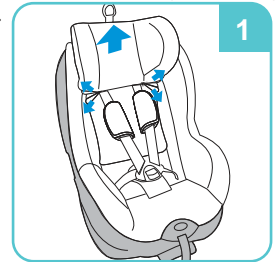


### 8.1 REMOVE THE COVER FOR CLEANING

The car seat cover is removable and washable. In case of light staining, clean using a damp cloth or soapy water. Refer to the care label attached to the fabric cover.

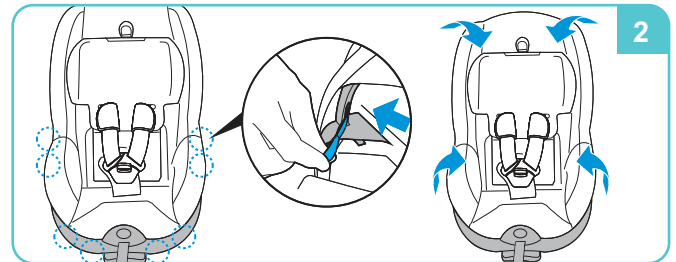
### 8.2 REMOVE THE COVER

1. Open the Velcro fasteners on headrest where the shoulder belts go through, then pull away the cover from the headrest (fig 1).



2. Unhook 8 elastic hoops at the sides edge of the shell, pull cover up and onto the seat surface.

**8.3 TO REFIT THE COVER, SIMPLY REVERSE THE PROCESS, HOWEVER ENSURE THE HARNESS AND BUCKLE ARE THE CORRECT WAY ROUND AND NOT TWISTED.**





## 9.WARRANTY

We guarantees its products against any manufacturer defect for a period of 2 years, start from the day of purchase.

1.The warranty does not cover defects or failures caused by inappropriate use or non-compliance with the installation and maintenance safety standards described in the instruction guides provided with the products.

2.The warranty shall be automatically considered void if the article acquired has been repaired or if an attempt has been made to repair it by an individual that is not authorized by our company.