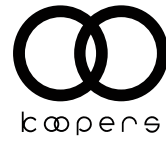


the journey will never be the same



Bolero (Isofix only)
Group 0+,I, (0-18KG)



Koopers Distribution Sdn Bhd

☎ 03-78324338

🌐 www.koopers.co

📘 www.facebook.com/koopersdistribution

✉ sales@koopers.co

📍 18-1, Jalan Bulan U5/BM, Section U5, Bandar Pinggiran Subang,
40150 Shah Alam, Selangor
Malaysia

User instructions

We are pleased that our “Bolero” car seat will accompany your child safely throughout their childhood life .

In order to protect your child, the Bolero must always be used and installed according to the instructions.

If you have any further query regarding its usage, please contact us.

Contents

1. Important Notice	2
2. Features	4
3. Attention for car seat usage	6
4. The adjustment and usage of the child car seat	6
4-1 Recline position adjustment.....	6
4-2 Harness adjustment.....	7
4-3 Headrest adjustment.....	8
4-4 Buckle adjustment.....	8
4-5 ISOFIX installation and removal.....	9
4-6 Support leg installation and adjustment.....	10
4-7 Usage of infant insert.....	10
4-8 Removing and Refitting the cover.....	11
5. Installation	12
5-1 Rearward facing.....	12
5-2 Forward facing.....	13
5-3 Change groups.....	13
6. Side facing installation	15
7. Cleaning and maintenance	15
8. Notice	16

1. Important Notice:

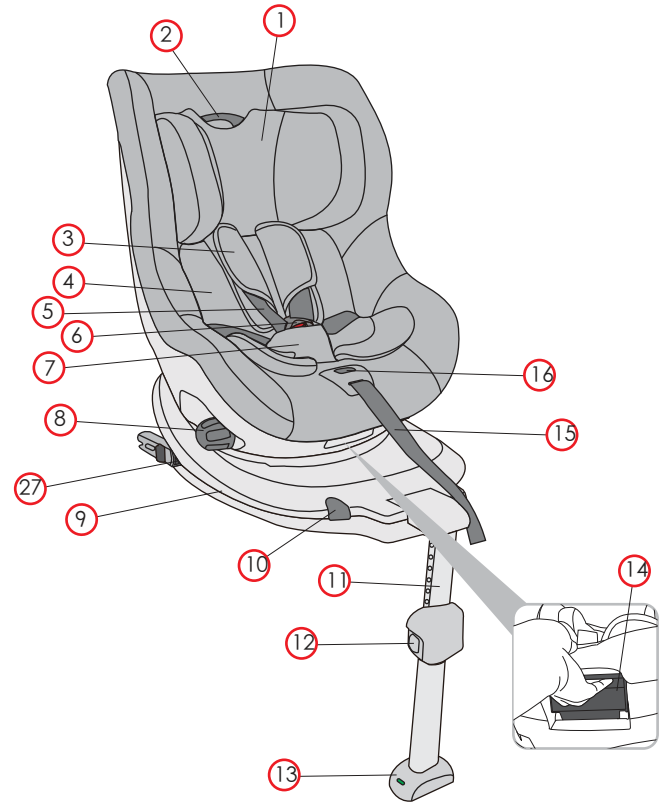
1. This child seat is suitable for child weighs less than 18kg.
2. Please get the operation manual from the net bag, which is located inside the back cover of the child seat, and read carefully.
3. Please read carefully before installation, serious injury will occur if installed incorrectly. Manufacturer won't take any responsibility for any risks in this case.
4. Never use the child seat without a cover. Never use any cover which is not recommended by manufacturer to replace the old cover, it is because the cover constitutes an integral part of the child car seat performance.
5. When the child seat is not provided with a textile cover, the seat should be kept away from sunlight, otherwise it may be too hot for child's skin.
6. Never place the child seat on the vehicle seat with an active airbag.
7. The child seat should be disposed when it has been subjected to violent stress in an accident.
8. Please ensure all passengers in the car use the safety belts, goods in car must be properly secured, otherwise the passengers and goods may injure the child during an emergency brake situation.
9. Buckle cannot be left in semi-locked status. Always ensure that the buckle is locked properly.
10. Don't make any changes or add any additions on the harness system in the child seat, otherwise it could seriously affect the safety and functionality.
11. The child should not be left on the child seat if he/she is not accompanied by an adult.
12. Keep the child seat away from the corrosive.
13. Always keep the child seat secured in the vehicle even when it is unoccupied, children should not be left in their child car seat unattended.
14. Manufacturer quarantee the quality, excluded second-hand child seat.
15. Please ensure that the lap strap is worn low down, so that the child's pelvis is firmly engaged on the seat.
16. All straps holding the child seat to the vehicle should be tight, the straps restraining the child should be adjusted to suit the child's body and the straps should not be twisted.

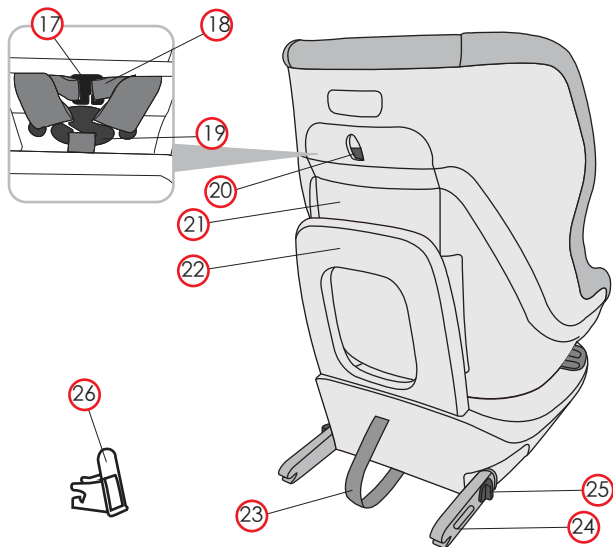
- 17. If you have any question about the usage and installation of the child seat, please contact our service hotline.
- 18. Do not use any weight bearing points other than those described in the instructions and marked in the child restraint.
- 19. Do not use forward-facing position when child weighs less than 9kg.
- 20. The instructions can be retained on the child seat for its life period and please take good care of the manual.
- 21. The rigid items and plastic parts of a child seat must be located and installed properly, make sure they are not trapped by a movable seat or a door of the vehicle during everyday usage.

Product Description

Group	Installation Methods	Approval type	The scope of application
0+	ISOFIX	Semi-Universal	0-13KG
I	ISOFIX	Semi-Universal	9KG-18KG

2. Features





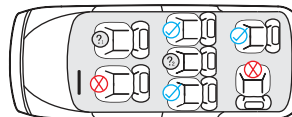
NO.	PART	NO.	PART	NO.	PART	NO.	PART
1	Headrest	2	headrest adjustment handle	3	shoulder pad	4	infant insert
5	shoulder straps	6	harness buckle	7	buckle pad	8	recline knob
9	car seat base	10	second lock button	11	support leg	12	support leg adjustment button
13	support leg indicator	14	rotation handle	15	adjustment strap	16	adjustment button
17	connector of shoulder pad	18	shoulder pad strap	19	harness yoke	20	instruction cabin cover button
21	instruction cabin cover	22	rebound board	23	ISOFIX adjustment strap	24	ISOFIX
25	ISOFIX release button	26	ISOFIX insert guider	27	ISOFIX second lock button		

3. The attention for car using

⚠ Danger! DO NOT use on a passenger seat with an active airbag. If hit by the airbag, death or serious injuries may occur.



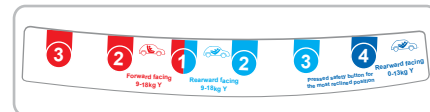
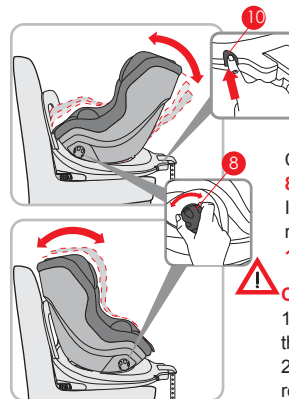
In order to properly protect your child, please read the instructions carefully.



? DO NOT use on a passenger seat with an active airbag.

4. The adjustment and usage of the child car seat

4-1 Recline position adjustment



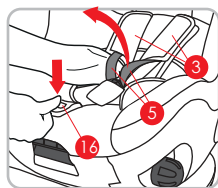
Change the recline positions by turning the recline knob **8**.

If you would like to turn to recline position 4 (the lowest reclined position), please press the second lock button **10** while turning the recline knob **8**.

⚠ Caution:

1. When the child's weight is less 13kg (group 0+), only the recline position 4 is suitable for rearward facing.
2. When the child's weight is 9-18kg (group I), only the recline position blue 1,2,3 are suitable for rearward facing.
3. When the child's weight is 9-18kg (group I), only the recline position red 1,2,3 are suitable for forward facing.

4-2 Harness adjustment

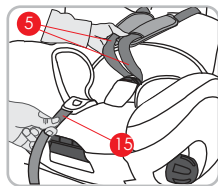


Loosen: press adjusting button **16** and at same time pull both shoulder strap **5** forwards (Do not pull on the shoulder pads **3**).

Caution: Adjusting button **16** with its operation function, please operate correctly according to the picture.

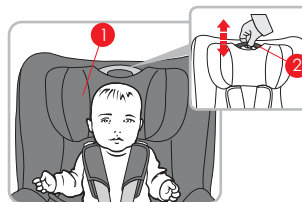


Tighten: Pull the adjustment strap **15** until the harness lies flat and close against your child's body.



Caution: Grasp the both shoulder straps **5** by one hand (with index finger and middle finger), and pull the adjustment strap **15** forward with another hand slowly, when the hand with shoulder strap touches the child body, then stop pulling the adjustment strap **15**, use the strength on shoulder strap properly.

4-3 Headrest adjustment

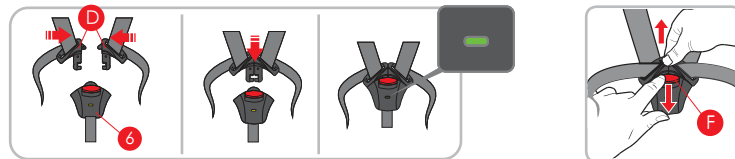


Pull up: Pull the adjusting handle **2** of the headrest upwards.

Caution: Please loosen the shoulder straps **5** before adjusting the headrest **1** (See details 4-2).

Push down: Push the adjusting handle **2** of the headrest downward.

4-4 Buckle adjustment



1. Attach the two buckle latches **D** together and engage them before putting them into the harness buckle **6**, this should make a clicking sound. Pull on the shoulder straps **5** until the harness lies flat and is close against your child's body. (See details 4-2 for how to adjust shoulder strap)

2. Press red button **F** to release the buckle.

Caution: Please make sure the shoulder straps **5** are not crossed and twisted.

4-5 ISOFIX installation and removal

ISOFIX installation

1. If your vehicle is not equipped with the ISOFIX insert guides as shown, clip the two insert guides **26** which are included with the seat, make sure the cut-out facing upwards onto the two ISOFIX attachment point **K** of your vehicle.

TIP: The ISOFIX attachment points **K** are located between the surface and the backrest of the vehicle seat.

2. Pull the grey fabric loop **23** to pull out both locking arms **24** and make sure the ISOFIX is completely pulled out, there is a noise of kakaka during the movement.



Caution:

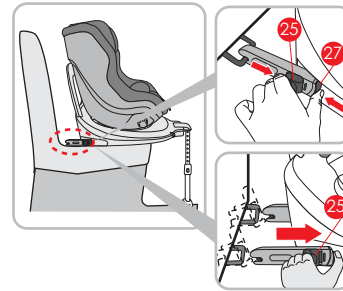
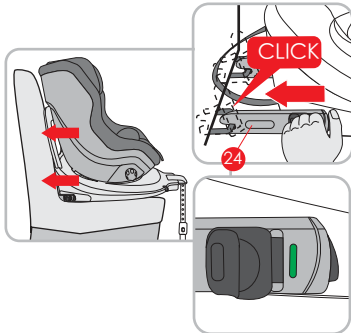
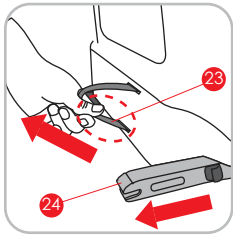
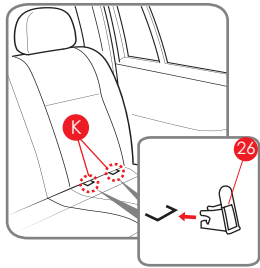
Please be aware, make sure you are pulling the lower end of the strap. (see picture marked with red circle)

3. Push the ISOFIX **24** with both hands and insert to both sides of ISOFIX insert guides with a click sound.

4. Push the child seat with a substantial amount of force as far as it will go.

Caution: The locking arms are only correctly engaged if both of the ISOFIX indicators are completely green.

5. Shake the child car seat to make sure it is safely attached and recheck the ISOFIX indicator to make sure that both of them are completely green.



Isfix Removed from Vehicle Seat

1. Press Isfix second lock button **27** and Isfix release button **25** together, press Isfix release button **25**, follow the red arrow direction until Isfix **24** separated from the vehicle seat.

2. Press both Isfix **24** until it retracts into car seat base.

4-6 Support leg installation and adjustment

To adjust and install the support leg, pull the support leg as far away from the back of the child car seat as possible.

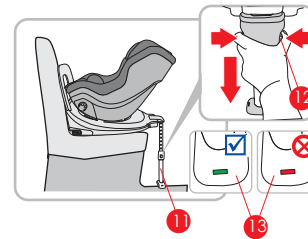
Push both adjustment buttons **12** and pull out the support leg **11** until it rests firmly on the floor of the vehicle.



Caution:

the support leg indicator **13** must be completely green.

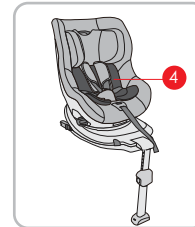
TIP: Pull the support leg more if the indicator is not green.



4-7 Infant insert usage

The infant insert **4** should be used when infant body weight is below 13kg.

TIP: The infant insert ensure your baby's spine is supported during travel.

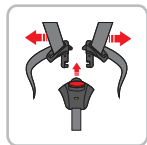


4-8 Removing and Refitting the cover

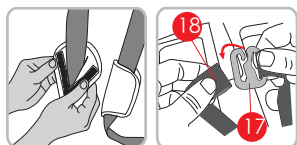
Cover removing

1. Turn the child seat into forward facing position and move the seat into the upright position (See details 4-1), pull the headrest to the highest position.(See details 4-3) and take out the infant insert.
2. Open the harness buckle (Pic1), remove the shoulder pad (Pic 2) and buckle pad (Pic 3).

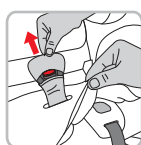
TIP: Split the shoulder pads before removing, then take down the shoulder pad strap 18



Pic 1



Pic 2



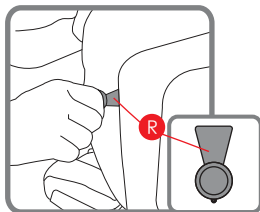
Pic 3

3. Take down the headrest cover and shell cover carefully.

Cover refitting

1. Turn the child seat into forward facing and move the seat into the upright position
2. Fit the cover of headrest and shell carefully
3. Fit the shoulder pad and buckle pad.

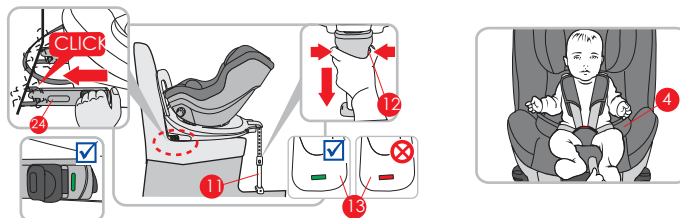
TIP: The round plate **R** will be helpful when fitting the cover.



5 Installation

TIP: The child car seat is always secured in the car via the ISOFIX anchoring, even when there is no child in the seat.

5-1 Rearward facing



Suitable for group 0+: weight 0-13kg (approx. birth-15 months)

1. Install ISOFIX 24 onto vehicle seat (See details in 4-5), make sure it is completely engaged and closed to vehicle seat.
2. Pull out support leg 11 until it rests firmly on the floor of the vehicle
3. Turn the child car seat to the lowest recline position (See details 4-1)
4. Place your child securely in the child car seat.

Suitable for group 1: weight 9-18kg (approx. 9 months-4 years)

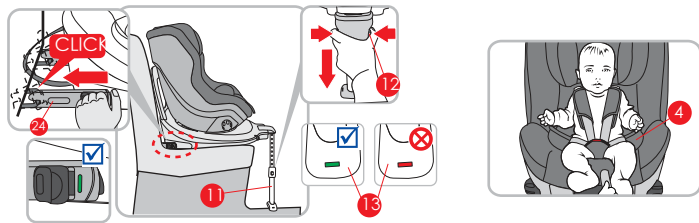
1. Installed ISOFIX 24 onto vehicle seat(See details in 4-5), make sure it is completely engaged and closed to vehicle seat.
2. Pull out support leg 11 until it rests firmly on the floor of the vehicle
3. Turn the child car seat to the recline position blue 1,2,3 (See details 4-1)
4. Place your child securely in the child car seat.



Caution:

1. Check the ISOFIX, support leg and harness system, make sure they work properly, make sure your child is always securely fastened.
2. The ISOFIX locking arms are only correctly engaged if both of the ISOFIX indicators are completely green.The support leg indicator 13 must be completely green.
3. No cross or twist of the harness system.
4. The infant insert 4 should be used when infant body weight is below 13kg.
5. ISOFIX insert guides are very helpful for ISOFIX installation 26.

5-2 Forward facing



Suitable for group 1: weight 9-18kg (approx. 9 months-4 years)

1. Install ISOFIX 24 onto vehicle seat(See details in 4-5), make sure it is completely engaged and closed to vehicle seat.
2. Pull out support leg 11 until it rests firmly on the floor of the vehicle
3. Turn the child car seat to the recline position red 1,2,3 (See details 4-1)
4. Place your child securely in the child car seat.

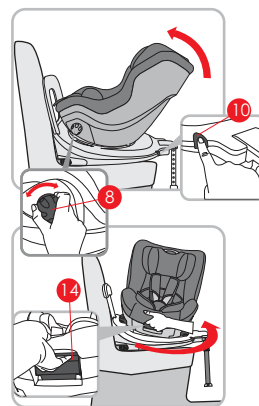
- ⚠ Caution:**
1. Check the ISOFIX, support leg and harness system ,make sure they work properly, make sure your child is always securely fastened.
 2. The ISOFIX locking arms are only correctly engaged if both of the ISOFIX indicators are completely green.The support leg indicator 13 must be completely green.
 3. No cross or twist of the harness system.
 4. ISOFIX insert guides are very helpful for ISOFIX installation 26.

5-3 Change groups

The child car seat have a safety button 10 which must be pressed when changing between group 0+ and group I. The safety button 10 is to prevent the child seat from being mistakenly used for the wrong group of your child.

Caution! Rearward facing is suitable for group 0+ and group I, forward facing is only suitable for group I.

A) Rotation function(from rearward to forward facing)

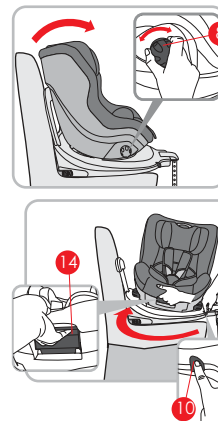


1. Grasp the turning knob 8 and pressed safety button 10 simultaneously, change the lowest reclining position to others.

2. Pull the rotation handle 14 and turn the seat into the direction of traveling.

- ⚠ Caution:**
1. Before every journey, make sure that the rotating part of child seat is fully engaged by trying to turn the seat around in both directions.
 2. Do not use the child seat forward facing when your child is below 9 kg.

B) Rotation function(from forward to rearward facing)



- Pull the rotation handle 14 and turn the seat into against the direction of traveling.

TIP: Grasp the turning knob 8 and pressed safety button 10 simultaneously, change to the lowest reclining position for group 0+.

- ⚠ Caution:**
- Before every journey, make sure that the child seat is in the right group and configuration for your child.

6. Side facing installation



This child car seat 360° seat rotation which makes it easier to get your child in or out of the child seat (Easy access function).



Pull the rotation handle **14** and turn to 90° and into easy access mode.

CAUTION!

When the child seat in group 0+ mode, it can only turn to 90°. When the child seat is in group I mode, it can turn to 360°

7. Cleaning and Maintenance

Important:

The cover is a safety feature. Never use the child car seat without it, don't put your child's safety at risk by using other replacement cover, they could stop the child seat from protecting your child as well as it should be.

Washing instruction:

The cover is removable and washable at 30, line dry only.



Machine wash, cold



Do not bleach



Do not dry cleaning



Do not tumble dry



Do not iron

8. Notice 1

1. This is an ISOFIX CHILD RESTRAINT SYSTEM. It is approved by Regulation No. 44, 04 series of amendments for general use in vehicles fitted with ISOFIX anchorage systems.
2. It will fit vehicles with positions approved as ISOFIX positions (as detailed in the vehicle handbook), depending on the category of the child seat and the fixture.
3. The mass group and the ISOFIX size class for this device are intended for: Group 0+ (birth - 13kg) D, group I (9-18kg) B1.

Notice 2

This Child Restraint is classified for "Semi-universal" use and is suitable for fixing into the seat positions of the following cars:

CAR	FRONT	REAR	
		Outer	Centre
(See the car list)	Yes	Yes	No

Seat positions in other cars may also be suitable to accept this child restraint. If in doubt, consult either the child restraint manufacturer or the retailer.